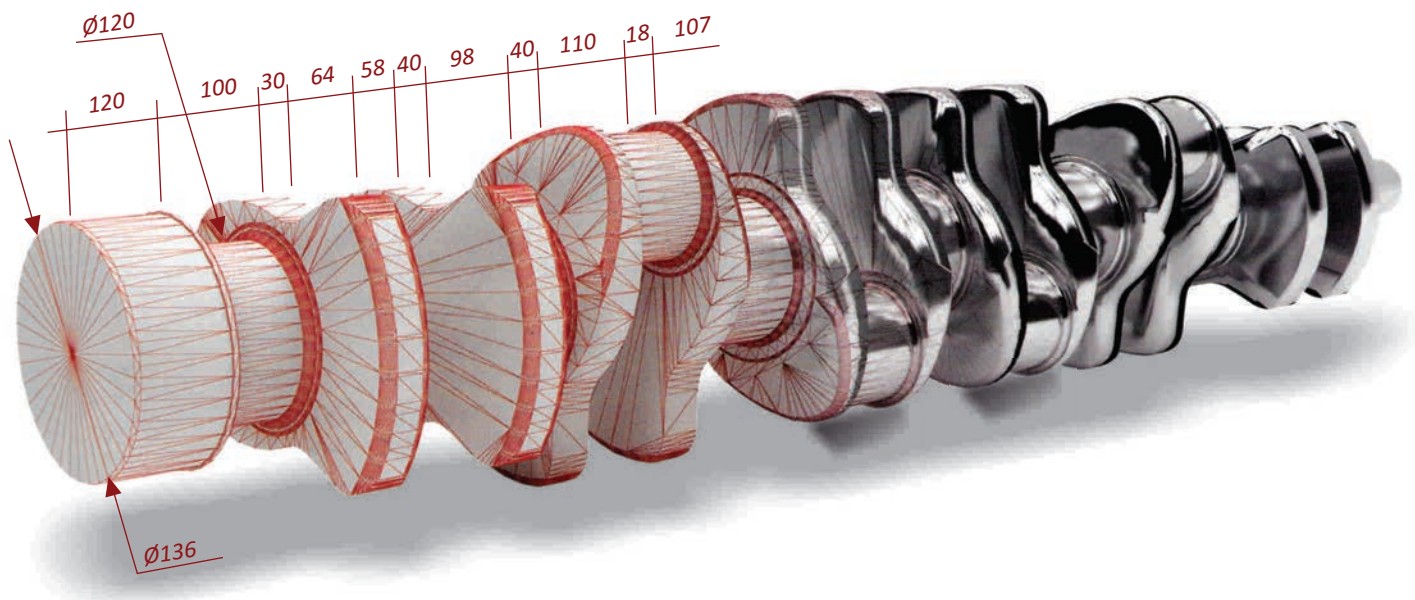




CRANKSHAFT MANUFACTURER



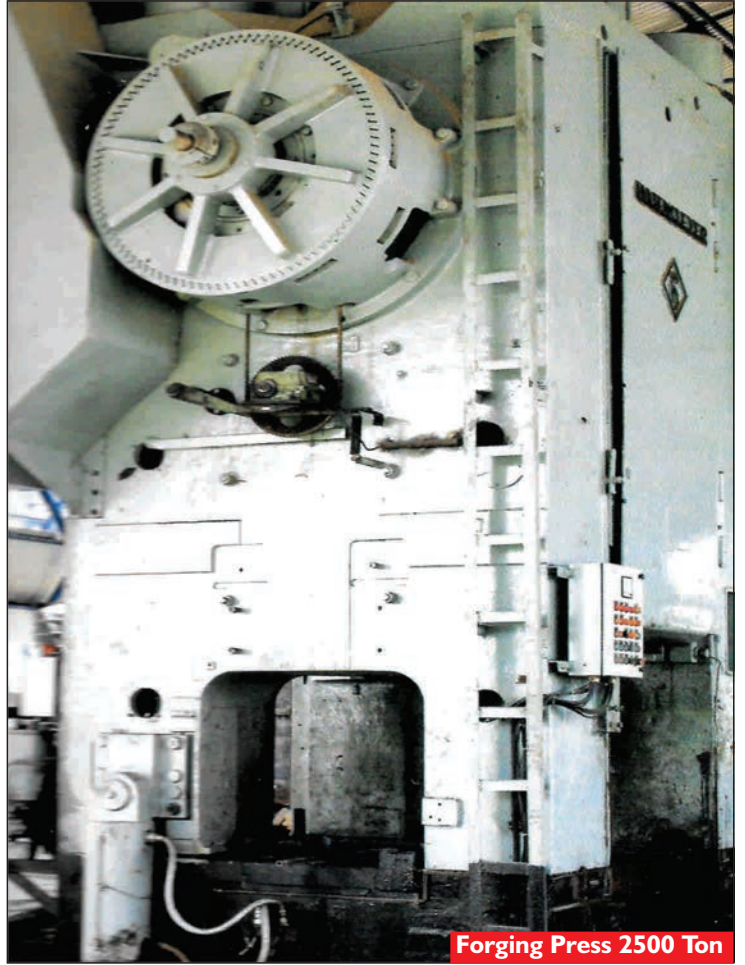
INHOUSE FORGING SG + CNC MACHINING

LARGEST CRANKSHAFT RANGE



CRANKSHAFT | CIGÜEÑAL | WAŁ KORBOWY | КОЛЕНЧАТЫЙ ВАЛ | VIRABREQUIN | ARBORE MOTORE | VILEBREQUINS

FORGED





CRANKSHAFT MANUFACTURER

Introduction: Styr Exports is a leading India based manufacturing company having two Hi-Tech Plants producing all types of crankshafts. Styr Forge has the largest crankshaft range in the world. Styr is a Government of India approved Export House, ISO 9001:2015 accredited and holding Soncap certification. Styr is a preferred and reliable supplier to selected OEM's and also to more than 75 Countries spread all over the world.

Crankshaft Range: Manufacturer of all types of heavy duty multi-cylinder crankshafts suitable for: Tractors, Trucks, Automobiles, Industrial Engines, Marine Engine, Refrigeration Compressors, etc.

Forged Crankshaft Grade Steel: EN8D, 42CrMo4, EN19C, 38MnS6, C.70, etc.

Installed Capacity: 72,000 Units per annum.

Hi-Tech Crankshaft Production Line:

- CNC Mass Centering & Facing Center
- CNC Machines
- Heller Pin Milling Center
- HMC Heavy Duty Centers
- VMC Heavy Duty Centers
- AEG Elotherm Induction Hardening Unit
- Heat Treatment, Hardening, Tempering, Normalizing & Stress Relieving Unit
- VMC + HMC Production Line
- CNC Grinders
- Dynamic Balancing Machines
- Automised Lapping Super Finishing Units

Quality Control:

- Styr Forge plants are ISO 9001:2015 accredited and hold Soncap certification.
- All crankshafts manufactured and inspected using Hi-Tech quality control systems.
- In-House Bruker Germany Spectrometer Lab for material analysis.
- Mechanical & Chemical testing.
- All crankshafts Magnafluxed & Fatigue tested.

Refrigeration Compressor Crankshafts - Extensive Range: In-House Hi-Tech Foundry ensures, the metallurgical composition of the 'Shell Mould SG Ductile' castings is of OEM grade.

New Crankshaft Development:

- Fully equipped to undertake any new crankshaft development.
- In-House tool room and Pattern shop with Cad/Cam facility.

Styr Warranty: We guarantee that all crankshafts manufactured by us are free from all types of defects. In case of any fitment defect we confirm to replace the defective crankshaft free of cost. Styr liability will be restricted only to the replacement of crankshaft and shall not include payment of any type of compensation towards any consequence(s) arising on account of fitment of any defective crankshaft.

Styr Disclaimer:

All Crankshaft manufacturer's symbols, numbers and descriptions are used in this catalogue for reference purpose only and do not imply that any part listed therein is the product of these manufacturer's.



A

Allis Chalmers	1
Armstrong Siddley	1

B

Badsun - Iran Model	1
Bedford	1
Belarus - MTZ - Jumz	1
BMC - Morris Oxford	1
BMW	1

C

Case - International Harvester	1-2
Caterpillar	2-4
Continental	4
Cummins	4

D

Daihatsu	4
David Brown	4
Deutz - Magirus	4-5
Dodge	5

E

Erkunt - Perkins - Turkey	5
---------------------------	---

F

Fendt	5
Fiat	5
Fiat - Iveco Tractor	5-6
Fiat Ducato - Iveco Daily	6
Ford - Automotive	6
Ford - Ebro - Fordson - New Holland	7-8

G

General Motor - Opel	8
----------------------	---

H

Hino	8
Honda	8
Hyundai	9

I

IFA Fortschritt	9
Isuzu	9

J

Jaguar	9
JCB	9
John Deere	9-10

K

Kia	11
Kubota	11

L

Lada	11
Land Rover Range Rover	11
Leyland	11
Lister Petter	11
Lombardini	12

M

M.A.N	12
Mazda	12
Mercedes Benz	12-13
Mitsubishi	13
MWM	14

N

Navistar	15
Nissan	15

P

Perkins - MF - Landini	15-18
IMT - IMR - Balkan States	18
Peugeot - Citroen	18

R

Renault	18-19
Renault Truck	19
Russian "T/D" Series - VTZ	19

S

Scania Truck	19
Shibaura	19
SMD - Jumz	19
Solis - Sonalika	19
Ssangyoung	19
Steyr	19
Suzuki	20

T

Toyota	20
Tumosan - Turkey	20
TVS - 3 Wheeler	20

U

Ursus	20
UTB - Romania	20

V

Volkswagen	20
Volvo	21

W

Willys MB - Ford GPW - Jeep	21
-----------------------------	----

Y

Yamaha	21
Yanmar, Kubota, Andoria-Stationary	21

Z

Zetor	21
ZTS	21

New Addition	21
--------------	----

India Crankshaft Range	22
-------------------------------	-----------

SE REF	ENGINE #	PART #	DESCRIPTION
ALLIS CHALMERS			
SE 1654	G 226 226 C.I.D. 70226535	70226535, 70213353, U3986, 70226526, 70229022, 70241291	SUPER 100, 170 & 175 GAS, W226, 3.7 LITER. TRACTORS: WD45 GAS. WHEEL LOADERS: TL10. 638-1800, TL11 THRU 73, TL12 THRU 1281. 4 CYL.
SE 1665	540	172 DIESEL	WITH BALANCER GEAR. 4 CYL.
SE 1675	160, MF 3 CYL.	R 1197987, DIESEL 90814233	MASSEY FERGUSON 35,50,150 GAS AND DIESEL
SE 1822	TRACTOR 6040 TRACTOR 160 WITH AD3.152. ENGINE	70280077	SPLINED NOSE, ROPE SEAL. 3 CYL.
SE 1976	ACS073	227550, 70227550	MODEL D10, D12, D14, D15, H3, I400, I600, 600. GAS. 4 CYL.
ARMSTRONG SIDDLEY			
SE 1507	ARMSTRONG	SL01 11 301 C. 20 H.P.	WITHOUT COUNTER WEIGHT. 2 CYL.
BADSUN - IRAN MODEL			
SE 1946	BADSUN	135 TI, 110 TI. HEAVY WEIGHT FORGING	NEW 1004.4T. IRAN MODEL. 4 CYL.
BEDFORD			
SE 1556	J-4 220	J-4 220	4 CYL.
SE 1122	J-6 330	J-6 330	6 CYL.
BELARUS - MTZ - JUMZ			
SE 1570	D-240 MTZ-80, MTZ-82	240-1005020-B1, 80 HP BELARUS MTZ-80/82 TRACTOR	WITH SEPARATE COUNTER WEIGHT 4 CYL.
SE 1711	MTZ 70 NEW D-65, JUMZ-6KL, JUMZ-6KM	D03-C08-A, 70 HP M-85.17, C-75.17	OIL SEAL 1/2 THREADING, 1/2 KNUURLING 4 CYL.
SE 1751	MTZ 70 OLD JUMZ D-65	D03-C08-A, 70 HP M-85.17, C-75.17	OIL SEAL FULL THREADING EGYPT MODEL. 4 CYL.
BMC - MORRIS OXFORD			
SE 1113	MORRIS OXFORD	IH 753. 4 CYL.	O.H.V. PETROL
SE 1114	BMC 1.5 AUSTIN	12H533. 4 CYL.	BRITISH LEYLAND U.K.
SE 1115	BMC 1.5 SAVA	37D212, 80476. 4 CYL.	3.013 BMC
SE 1531	BMC 154	BMC LEYLAND 154, 1.5 L, J2, J4. 12H2540, 12H533, 12H2536	AUTOLAND 154 TRACTOR. 37D812. 4 CYL.
SE 1704	AMBASSADOR	12H165. 4 CYL.	SPORTS ENGINE APPLICATION
BMW			
SE 1892	BMW N55 ENGINE	11212163665	
SE 3001	BMW N47 - B47. 2.0 DIESEL ENGINE (977)	11218515071 / 11217803479	4 CYL.
SE 3002	BMW N57. DIESEL ENGINE (971)	11217799970	6 CYL.
SE 3003	BMW N55. BENZIN ENGINE	11217580483	6 CYL.
SE 3004	BMW N20. 2.0 BENZIN MOTOR	11217640165 / 11217599247	4 CYL.
CASE - INTERNATIONAL HARVESTER			
SE 1141	3110995R91 D154, 154 C.I.D. 2.5 LITER D165, 165 C.I.D. 2.7 LITER D171, 171 C.I.D.	3110995R91, 05700AB, 751303	BD154, 144, 364, 384, 444 TRACTORS. 2424, S, SC, SE TRACTORS. 780, 880, 885, 4600 TRACTORS. 4 CYL.
SE 1161	3144626R91 D239 239 C.I.D. 3.9 LITER	3144626R91, 015C1, 3132752R3, 015C1 1089, 3144626, 182752R2, 37CR4, 2744406R1, IH625R2, 3144626R92	544, 574, 624, 654, 674, 684, 685 BACKHOE 685 TRACTOR, TD7, TD7E, TD8C CRAWLER TRACTORS, TD8 DOZER. AVAILABLE WITH: BALANCER GEAR RING, NOSE GEAR. 4 CYL.
SE 1162	D206 TRACTOR 654 ENGINE 3132968R93 D206 554, 584	3132968R91, 3132968R93, 1329196CI	AVAILABLE WITH: BALANCER GEAR RING, NOSE GEAR. 4 CYL.
SE 1571	300, 310 GAS	G11700, R1204916	CA 300, 93016233
SE 1598	D268 EARLY MODEL 3228376R91 268 C.I.D. 4.4 LITER	3228376R91, 218528R1, 218528R2, 218528R3, 528R2-79, A09-7292, 3.218528R1	510B LOADER NEUSS DIESEL AVAILABLE WITH: BALANCER GEAR RING, NOSE GEAR. 4 CYL.
SE 1655	A39150 188 BUSHING 188 C.I.D. 3.1 LITER 4 CYL.	A39150, 976321, A39151, G-11740, G-11741. CASE 188 SMOOTH PILOT CRANK	430, 440, 441, 470, 480, 504, 530, 570, 580, 580B, 630, 640 WHEEL TRACTORS, W3, W5A, 480C, 580C, 1845 WHEEL LOADERS, 2504, 3514, 600, 660, COMBINES, 310E, 310F, 310G, 350, 450 CRAWLER TRACTOR, 1150 1155, 1255 WINDROWERS, H-25B

SE REF	ENGINE #	PART #	DESCRIPTION
CASE - INTERNATIONAL HARVESTER			
SE 1656	A144011 207 NON TURBO 207 C.I.D. 3.4 LITER	A144011, 976321	350, 450, 450B CRAWLERS 580C, 580D WHEEL TRACTOR 4 CYL.
SE 1657	CASE 336	251, A267, A2849, 301	NATURAL CRANK. 4 CYL.
SE 1658	CASE. YEAR 1955 - 1970	CASE G148	4 CYL.
SE 1705	CASE 4 CYL.	CASE 301. BIG CON. PINS	AVAILABLE WITH BALANCER GEAR RING
SE 1795	IHC GEAR	CRANKSHAFT NOSE GEAR	INTERNATIONAL HARVESTER
SE 1800	A151015 188 SPLINED 188 C.I.D. 3.1 LITER 4 CYL.	A151015, 976321, A39151, G-11740, G-11741	430, 440, 441, 470, 480, 504, 530, 570, 580, 580B, 630, 640 WHEEL TRACTORS, W3, W5A, 480C, 580C, 1845 WHEEL LOADERS, 2504, 3514, 600, 660 COMBINES, 310E, 310F, 310G, 350, 450 CRAWLER TRACTOR 1150, 1155, 1255 WINDROWERS, H-25B
SE 1807	D239	IH. 4 CYL.	CRANKSHAFT WITH BALANCER GEAR RING & NOSE GEAR
SE 1817	1640, 1644. 6 CYL.	3907804	2144 COMBINES, CONSOLIDATED DIESEL
SE 1823	D206 TRACTOR 624 ENGINE	3055787R92	AVAILABLE WITH: BALANCER GEAR RING, NOSE GEAR. 4 CYL.
SE 1824	D268	D268 NEW MODEL	AVAILABLE WITH: BALANCER GEAR RING, NOSE GEAR. 4 CYL.
SE 1867	CASE IH 422/M2, 422T/M2, 422T/M3	CASE SKID STEERS 410, 420, 420CT	STROKE: 100 mm. 4 CYL.
SE 1868	CASE IH 422/M2, 422T/M2, 422T/M3	CASE SKID STEERS 410, 420, 420CT	STROKE: 90 mm. 4 CYL.
SE 1893	CASE NEW CRANKSHAFT	G126 EARLY G148, G11164, G11700, G11701, G10071	STROKE: 4.13". CON PIN DIA Ø: 1.9365" - 1.9375" MAIN JOURNAL DIA Ø: 2.6230" - 2.6240" NOTE: 1960 & EARLIER G148
SE 1907	CASE IH	JX1060C, JX55, JX60, JX65. 8035.05, 8035.06	3 CYL.
SE 1908	CASE IH	AVJ70, JX75, JX80, JX85, JX90, JX95, VJ70, VJ80	4 CYL.
SE 1918	IHC-CASE (CNH) F4L 912 D	20050591204	WITH SEPARATE COUNTER WEIGHT. 4 CYL.
SE 1919	IHC-CASE (CNH) F6L 912 D	20050591206	WITH SEPARATE COUNTER WEIGHT. 6 CYL.
SE 1938	CASE IH TRACTOR	3907803, J908031, J918323, 3929036 4 CYL.	CASE IH TRACTOR(S) 5120, 5220. CASE SKID STEER LOADER(S) 40XT, 60XT, 70XT, 75XT, 85XT, 90XT, 95XT, 1840, 1845C. CASE CONSTRUCTION & INDUSTRIAL(S) CX130, CX160, W11B
SE 1943	IH C-60	INTERNATIONAL IH C60 NEW REPLACES # 357247R1	4 CYL.
SE 1958	CASE	A37210, G11183, G11708, G11709, 967731	4 CYL.
SE 2043	DT466 675669C92	470005, 4333-675669C91/C92, 675669C91, 675669C93, 4333- 675591C2, 675591C3	6 CYL.
SE 2044	DT436 675663C92	675051C1, 675663C92	6 CYL.
SE 2045	DT414 675668C92	675050C1, 675668C92	6 CYL.
CATERPILLAR			
SE 1605	1W-9771, 2W-8367, 3204 CATERPILLAR	1W9771, 1W0400, OR1206, 4N0111, OR1209, 4N1111, OR5024, 4N111X, OR5164, 4N40012, OR5474, 6N8290, OR5560, 7N5137. 120, 120B, 120G, 120H, 12G, 12H, 130G, 140B, 140G, 140H, 14G, 160G, 1693, 16G, 183B, 215B, 215D, 219D, 225, 225B, 225D, 227, 231D, 235, 235B, 235C, 235D, 245, 245B, 245D, 365CL, 374DL, 385B, 385BL, 385C, 390D, 5080, 5090B, 583, 594, 594H, 613, 613B, 613C, 621, 621B, 623, 623B, 627, 627B, 631C, 631D, 631E, 633, 633C, 633D, 637, 826H, 826K, 834, 910, 926, 926E, 930, 930R, 930T, 941, 941B, 943LGP, 943, 951B, 951C, 953, 963, 966, 966C, 966R	318 C.I.D. 5.2 LITER. 4 CYL.

SE REF	ENGINE #	PART #	DESCRIPTION
CATERPILLAR			
SE 1651	1397018, 3054, 3054B 244 C.I.D. 4.0 LITER	7C8214, 7C3184, 071Z724149, ZZ90082	COLD PLANER: PR-75. ENGINE GENERATOR SET: 3054. PAVING COMPACTOR: CB-424 CB-434B CB-544 CP-323 CP-433B CS-323 CS-431B CS-433B PF-300B PS-110 PS-130 PS-180 PS-300B. BACKHOE LOADER: 416 416B 416C 426 426C 428 428B 436 438. CAT COMPACTOR: 426B, CB534, CB534B, CB534C, CB545. ASPHALT PAVER: AP-800 AP-800B WE-601B. EXCAVATOR: 205 206 212 307. ENGINE - INDUSTRIAL: 3054. TELEHANDLER: TH63. FORKLIFTS: TH62, TH63, TH82, TH83, TH103. MINI HYDRAULIC EXCAVATOR: 307-A. 4 CYL.
SE 1869	3081852, 3014, 3024C, C2.2	226D, XQ35, 249D, AP255E, 239D, 232D, DE18E3, DE22E3, XQ35, CC34B, 226B3, CB34B	STROKE: 100 mm. 4 CYL. DIESEL. WITH BALANCER FITMENT WEB
SE 1870	154-1201, 3014, 3024C, C2.2	226D, XQ35, 249D, AP255E, 239D, 232D, DE18E3, DE22E3, XQ35, CC34B, 226B3, CB34B	STROKE: 90 mm. 4 CYL. DIESEL. WITH BALANCER FITMENT WEB
SE 1871	100-4034 CATERPILLAR 3056	REPLACES OEM: 1930159 924G, 924GZ, CP-663E, CS-663E, CS-683E	WITHOUT MOUNTING FOR RELUCTOR / TIMING GEAR. 6 CYL.
SE 1872	240-8467 CATERPILLAR 3056E	REPLACES OEM: 1930159, 2340207 CS-683E, CP-573E, 924G, 924GZ, CS-663E, CP-663E, 928G, 930G, 924G, CS-573E, CP-573E, M322C, AP-655C, 930G, CS-663E, CP-663E, CS-583E, AP-655C, BG-2255C, CS-563E, CP-563E, IT28G, M316C, M322C, M318C, M322C, CS-583E, CS-573E, 550B, 574B , 560B, 574B, 564	WITH MOUNTING FOR RELUCTOR / TIMING GEAR. AVAILABLE WITH LOOSE TIMING GEAR. 6 CYL.
SE 1873	3056E. TIMING GEAR	3116L002/159, 249-9227	ONLY TIMING GEAR
SE 1904	4N7692, 2W-7960 3304 CATERPILLAR	120G, 130G, 215D, 219D, 225DLC, 229D, 518, 518C, 936E, 936F, 950E, 963LGP, 963, CB-534, CS-643, CP-643, CS-653, CP-653, D4ESR ,G3304, G936	425 C.I.D. 7.0 LITER. 4 CYL.
SE 1933	CATERPILLAR 3054, 3054C/E. C4.4T. C4.4T/TA NEW LATER VERSION	2327400, 2327439, 3642828, 3842829, 4P9948, 1397018. PERKINS T 31315681. MF 5300, 5310. LONG WEB CRANKSHAFT. NATURALLY ASPIRATED / TURBO. WITH TIMING RING FITMENT PROVISION. SPLINED. 3 PULLEY HOLES. LIP SEAL. 10+1 FLANGE HOLES	AP555E, AP-500E, BG555E, BG500E. CB534DXW, OS150CHW, OS360 CS423, CS533, CP423, CP533. CP54, CP44, CS44, CS54. 914G, IT14G. 416, 420, 430, F, F2, FIT. 422, 428, 432, 434. D5KLLGP, D4KLLGP, D4KXL, D5KXL, D3KXL, D3KLLGP. 312, 318, M315D, M313D. 910K, 914K. ENGINES 1004/1004T. 4 CYL.
SE 1950	CATERPILLAR 2327400	2327400, ZZ90239, 1004	KEYED. 3 PULLEY HOLES. FLANGE: 10 HOLES, 1 DOWEL. 4 CYL.
SE 1951	455-3693, CATERPILLAR C4.4	BOOTING COMPACTOR: CB-64B CB-66B CB-68B CB10 CB7 CP44B CP54B CS44B CS54B CS64B CW-16 CW-34 CW34. TRACK TRACTOR: D3K2 LGP D3K2 XL D4K2 LGP D4K2 XL D5K2 LGP D5K2 XL. ASPHALT PAVER: AP500F AP555F. WHEEL EXCAVATOR: M315D2 M317D2. EXCAVATOR: 320 GC 320 GX 320D2 GC 318D2 318D2L	KEYED. 3 PULLEY HOLES. FLANGE: 10 HOLES, 1 DOWEL. WITH TIMING RING FITMENT WEB. WITH DRILLED TIMING PIN HOLE ON TOP WEB. 4 CYL.
SE 1952	359-0715, CATERPILLAR C4.4 INDUSTRIAL ENGINE	174792, MACHINE 444, 44400001-UP, RENR9961-02, 420E, 430E, M313D, TL1055C, CS54, M315, IT14G, M317, D5KXLLGP, CB54B, CB64, 914G2, TL943C, CW34, M313D, 430E, CS54, CS44, SPF343C, 914G, TL1255C, CW34, AP555E, CB54, 450E, CB54, TL642C, CS54B, M315D, D3K, CS64B, M315D, TH407C, 450E, 420E, M315D, TH337C, AP500E, M313D, D4KXL, 450E	KEYED. 3 PULLEY HOLES. FLANGE: 10 HOLES, 1 DOWEL. BIG CON PIN JOURNAL. WITH TIMING RING FITMENT WEB. WITH DRILLED TIMING PIN HOLE ON TOP WEB. 4 CYL.

SE REF	ENGINE #	PART #	DESCRIPTION
CATERPILLAR			
SE 1964	232-7400 CAT 3054C, 3054E, C4.4	072-156, 072-106, 072-140, 416D, 416E, 416F, 420D, 420E, 420F, 422E, 422F, 424D, 428D, 428E, 428F, 430D, 430E, 430F, 432D, 432E, 432F, 434E, 434F, 442D, 442E, 444E, 444F, 914G, AP300, AP-650B, AP-800D, BG- 225C, BG-230D	CB-434D, CB-434DXW, CB534D, CB-534D, CB-534DXW, CB-564D, CB564D, CD54, CS-423E, CS533E, CS-533E, CP-533E, CP-433E, CS-433E, IT14G, PF-300C, PS-300C, PS-360C, TH210, TH215. SPLINED. LIP SEAL. 3 PULLEY. 10 + 1 FLANGE. WITH TIMING GEAR RING WEB. WITH DRILLED TIMING PIN HOLE ON TOP WEB. 4 CYL.
SE 1996	291-8640 CATERPILLAR C3.3	CATERPILLAR 273-9297, GENERATOR SET C3.3DE33E0	WITH DRILLED TIMING PIN HOLE ON TOP WEB. 3 CYL.
SE 1997	364-2828, 3054 7BJ CATERPILLAR	312B, 312BL, 312C, 312CL, 416B, 416C, 416D, 420D, 426C, 428B, 428C, 430D, 436C, 438C, 908, 914G, CB-434B, CB-434C, CB-535B, CB-544, CB-545, CP- 323C, CS-323C, CS-431C, CS- 433C, CP-433C, IT14G, M312, M315, PS-150B, TH210, TH215	LONG WEB CRANKSHAFT. SPLINED. 3 PULLEY HOLES. LIP SEAL. 10+1 FLANGE HOLES. 4 CYL.
SE 2046	6I1453. C15 CAT 3406E	1368882, 7C3536, 4P9121, 9Y9112	6 CYL.
CONTINENTAL			
SE 1652	830686M91 Z134 - GAS 134 C.I.D. 2.2 LITER	830686M91, Z129C205, Z129C500, Z134C500, Z129, Z134, 1750169M1	GAS Z134, MF35, MF135 4 CYL.
SE 1653	Z120, MF T020	MFT020, 47120042, A716357	
SE 1949	Z145 GAS ENGINE	1047539M1, Z145C500, Z145C600	GAS MF135, MF150, MF230G, MF235G, MF245G, MF2500. 4 CYL.
SE 1960	CONTINENTAL GAS ENGINE	G-176 PART # 830756M91, G176C300	LONG NOSE GEAR
SE 1961	CONTINENTAL ENGINE	ENGINE N-62. N-56	LONG NOSE KEY
SE 1977	Z-129 C500, Z-134 C500 Z-129 C205	1750169M1, 830686M91 GAS ENGINES	4 CYL.
CUMMINS			
SE 1816	6BT	3907804, 3903828, 3929037, 3905619, 3908032. CUMMINS B SERIES 5.9 LITER	6 CYL.
SE 1874	4B, 4BT, 4BTA	3907803, 3908031, 3929036, 390382, 3863276. VB220. CUMMINS B SERIES 3.9 LITER	4 CYL.
DAIHATSU			
SE 1504	DAIHATSU DG	88.0 mm. DIESEL 2530 CC. DELTA	EGYPT MODEL. 4 CYL.
DAVID BROWN			
SE 1174	DB 4/49. AD 4/49	K962224, K917985	FITS 990 LATE S/N. 4 CYL.
SE 1175	DB 4/55. AD 4/55 DB 219 ENGINE	K962147, K905196, K210100	FITS 990 SELECTOMATIC, 995, 996, 1200, 1210, 1212, 1290, 1294, 1390, 1394, 1400. 4 CYL.
SE 1558	DB 3/55	K961726, K912017	FITS 780, 785, 880, 885, 1190, 1194, 380CK WITH SEPARATE COUNTER WEIGHT. 3 CYL.
SE 1650	4/55T DB219T	K963412, K928415	TURBO CHARGED ENGINES FITS 1394, 1410, 1412, 1490, 1494. 4 CYL.
SE 1804	DB 4/49. AD 4/49	LIBYA MODEL	SHORT STROKE. 4 CYL.
SE 1825	DB 4/47. AD 4/47	K961007, K908453	FITS 990 IMLEMATIC, 990A, 990B. 4 CYL.
SE 1971	K914788	K914788 FITS TRACTORS 1594, 1690	6 CYL.
DEUTZ - MAGIRUS			
SE 1194	F4L 912. 229 C.I.D. 3.8 LITER	02138819, 02929340, 04152903, 20 0505 91204	6240, 6250 WITH SEPARATE COUNTER WEIGHT. 4 CYL.
SE 1195	F6L 912	02929342, 04151011, 2136993, 2136932, 20 0505 91206	WITH SEPARATE COUNTER WEIGHT. 6 CYL.
SE 1502	F3L 912. 172 C.I.D. 2.8 LITER	02929338, 04152646, 210556, 2136928, 20 0505 91203	6240, 6250 WITH SEPARATE COUNTER WEIGHT. 3 CYL.
SE 1603	F1L 511	02233635	WITH SEPARATE COUNTER WEIGHT. 1 CYL.
SE 1604	F4L 912	02929339, 20 0505 91214	WITH SEPARATE COUNTER WEIGHT. 4 CYL. AVAILABLE WITH BALANCER GEAR
SE 1689	F2L 912 D/W	02232854, 02929337, 04152591, 3371552, 20 0505 91202	WITHOUT COUNTER WEIGHT. 2 CYL.
SE 1708	F2L 511 D/W	04152745, 20 0505 51102	WITH SEPARATE COUNTER WEIGHT. 2 CYL.
SE 1826	F2L 511 D/W	04152745, 20 0505 51102	WITH INTEGRATED COUNTER WEIGHT. 2 CYL.
SE 1865	F6L 913	02139148, 02931056, 20 0505 91300	WITH SEPARATE COUNTER WEIGHT. 6 CYL.

SE REF	ENGINE #	PART #	DESCRIPTION
DEUTZ - MAGIRUS			
SE 1866	BF6L 913/C/T	02929345, 02139405, 20 0505 91301	WITH SEPARATE COUNTER WEIGHT. 6 CYL.
SE 1875	F3L 912. 172 C.I.D. 2.8 LITER	02929338, 04152646, 210556, 2136928, 20 0505 91203	6240, 6250 WITH INTEGRATED COUNTER WEIGHT. 3 CYL.
SE 1876	F4L 912. 229 C.I.D. 3.8 LITER	02138819, 02929340, 04152903, 20 0505 91204	6240, 6250 WITH INTEGRATED COUNTER WEIGHT. 4 CYL.
SE 1877	F4L 913	04151013, 02931050, 20 0505 91304	WITH SEPARATE COUNTER WEIGHT. 4 CYL.
SE 1891	DEUTZ BF6M1013	02929960	WITH FLANGE GEAR & CRANK FLANGE. 6 CYL
SE 2068	DEUTZ F6L 912	DEUTZ F6L 912	INTEGRATED COUNTER WEIGHT. 6 CYL.
DODGE			
SE 3005	DODGE NITRO (KA) 2007-2011 2.8CRD	68253758AA, 68027448AA, 68158311AA, 68211059AA	4 CYL.
ERKUNT - PERKINS - TURKEY			
SE 1998	ERKUNT 1103 SPLINED	1103, 1103B-33, 1103C-33, 1103C-33T 4181V017 - PERKINS DIESEL	LIP SEAL. 3 PULLEY HOLES. 6 + 1 FLANGE HOLES. 3 CYL. STROKE: 5.000" (127.000 mm). ROD: 2.4986-2.4994" (63.466-63.486 mm). MAIN: 2.9982-2.9990" (76.155-76.176 mm)
SE 1999	ERKUNT 1103 MILLED - KEYED	ZZ90236. NEW MODEL	SNOUT: MILLED, KEYED. 3 CYL. 3 PULLEY HOLES. LIP SEAL. 6 + 1 FLANGE HOLES.
SE 2000	ERKUNT	ZZ90237, ZZ90241, 4226955M91	ERKUNT - PERKINS 1104C-44, 1104C-44TA. BIG CON PIN JOURNAL. SNOUT: 3 HOLES, KEYED. FLANGE: 10 + 1 DOWEL. 4 CYL.
SE 2001	ERKUNT	ZZ90222, ZZ90239	ERKUNT - PERKINS 1004-1104 LIP SEAL. SPLINED NOSE. LIP SEAL. 10 + 1 FLANGE HOLES 3 PULLEY HOLES. 4 CYL.
FENDT			
SE 2002	D226, D229, D225	MWM. 001841C91I, 922681400018, 922681400016, 118670, 118690	WITH SEPARATE COUNTER WEIGHT. 4 CYL. AVAILABLE WITH BALANCER GEAR RING
FIAT			
SE 1532	FIAT 1100	BA869699	4 CYL.
SE 1715	ALFA ROMEO 1.8		
SE 1716	ALFA ROMEO 2.0		
SE 1717	FIAT 1.3 DIESEL		1.3 DIESEL
SE 1799	FIAT 1.3	FIRE ENGINE	GASOLINE
SE 1973	FIAT 1.3L	OE 4442701	FLANGE HOLES: 6
SE 1974	FIAT 1.3 MULTIJET DIESEL	OE 55200307, 71788727	SUITABLE FOR: OPEL: ASTRA, AGILA, COMBO, CORSA, MERIVA, TIGRA. FIAT: PUNTO, PANDA, DOBLO, PALIO, FIORINO, STRADA, LINEA, 500, IDEA. ALFA ROMEO: MITO. ENGINE TYPE: 188A8, 188A9, 199A2, 199A3, 199A1, 199B1, 199B4, 223A9, 263A2, Z13DT, Z13DTH, Z13DTJ, A13DTE, A13DTR, A13DTC, B13DTC, B13DTE, B13DTR
SE 2055	FIAT 1.3L FIAT 1300 ENGINE FIAT 1.3cc DIESEL	4442701	FIAT 147. 79 to 84 4 CYL.
SE 3006	FIAT DUCATO 2.3 MULTIJET EURO 5-6	5801846065	4 CYL.
SE 3007	FIAT DOBLO. SCUDO 1.9 JTD DIESEL	71736266	4 CYL.
SE 3008	FIAT DUCATO 2.3 MULTIJET F1AE. IVECO DAILY. KARSAN JEST MİNİBÜS. KARSAN J10 MİNİBÜS. EURO 4	504049281	4 CYL.
SE 3009	FIAT EGEA - LINEA - DOBLO - PUNTO - FIAT 500 1.6 MULTIJET DIESEL	71753030	4 CYL.
FIAT - IVECO TRACTOR			
SE 1786	3 CYL.	EGYPT-ALLIS & ROMANIA 3 CYL.	SYRIA-FRSAN. 95 mm
SE 1859	FIAT 750, 850 TRACTOR	8818711. FITS FIAT TYPE CO3 ENGINE. OM55	STROKE 120 mm. 4 CYL.
SE 1878	8040.05	98461244	MAIN JOURNAL DIA Ø: 76.2 mm. CON PIN DIA Ø: 58.75 mm. STROKE: 110 mm. FLANGE: 95 mm, 6 FLANGE HOLES. SHORT WEB. 3 CYL.
SE 1894	TRACTOR 474V, 480, 480S, 500S, 540	4785106, 8035-01/02/04	MAIN JOURNAL DIA Ø: 76.20 mm. CON PIN DIA Ø: 58.75 mm. STROKE: 110 mm. FLANGE: 110 mm. 7 HOLES. 3 CYL.

SE REF	ENGINE #	PART #	DESCRIPTION
FIAT - IVECO TRACTOR			
SE 1902	FIAT 55.46/55.56/54C/ 60.56	4785111, 98461246, 5088486, 99464932. 46 SERIES: 55-46, 60-46. 56 SERIES: 55-56, 60-56. 65 SERIES: 55-65, 60-65. 66 SERIES: 45-66, 50-66, 55-66. 66 SERIES: 56-66, 60-66. 75 SERIES: 55-75, 60-75. 76 SERIES: 45-76, 55-76, 60-76. 85 SERIES: 55-85, 60-85, 62- 85. 86 SERIES: 55-86, 62-86. 88 SERIES: 55-88, 60-88. 90 SERIES: 55-90, 60-90. 93 SERIES: 60-93. 94 SERIES: 60- 94. L SERIES: L60	FIAT AGRICULTURAL TRACTOR. 3 CYL. MAIN JOURNAL DIA Ø: 79.8 mm. CON PIN DIA Ø: 63.75 mm. STROKE: 115 mm. FLANGE: 114 mm. 7 HOLES
SE 1903 SE 1760	8045.05 TRACTOR, 65.46, 70.56, 70.66, 80.66, 8090 TUMOSAN	AGRICULTURAL TRACTOR 4785304, 4785110, 98451529, 5088487. 66 SERIES: 65-66, 70-66, 80- 66. 76 SERIES: 70-76, 80-76. 90 SERIES: 65-90, 70-90, 80- 90, 85-90. 93 SERIES: 65-93, 72-93, 82-93, 88-93. 94 SERIES: 65-94, 72-94, 82-94, 88-94. L SERIES: L65, L75, L85, L95	MAIN JOURNAL Ø: 79.791 mm. CON PIN Ø: 63.744 mm. STROKE: 115 mm. FLANGE: 114 mm. 7 HOLES. 4 CYL.
SE 1909	FIAT 450, 8030.00/8035.01 CLASSIC MODELS 446, 450, 466, 470, 480, 500, 540	4653850, 4602840, 1930130 UTB 450/445 TRACTOR. UNIVERSAL FARM LINER TRACTOR CRANKSHAFT. EGYPT- ALLIS. SYRIA-FRSAN	MAIN JOURNAL Ø: 76.2 mm. CON PIN Ø: 58.75 mm. STROKE: 110 mm. FLANGE: 95 mm. 6 HOLES. WEB GROVE ON 4th MAIN JOURNAL. DIA Ø FOR MIDDLE EAST MARKET . 3 CYL.
SE 1910 SE 1819	FIAT 50 NC LORRY - VAN 8040.02	4653287. CLASSIC MODELS 550, 600, 640, 666, 670, 680	FLANGE: 95 mm. FLANGE: 6 HOLES. 4 CYL.
SE 1911 SE 1759	FIAT 8040.05, 8040.25	98451527, 098449226, 504075031 50.9-65.12 ZETA, 65E10-75E12, 50NC. 85.12, 65.9, 35.9, SUITABLE FOR TRACTOR. EURO CARGO 199101. ZETA 197901- 199212	MAIN JOURNAL Ø: 79.8 mm. CON PIN Ø: 63.75 mm. STROKE: 115 mm. FLANGE: 114 mm. 7 HOLES. 4 CYL.
SE 1913 SE 1864	FIAT 750/850 TRACTOR	4707125. FITS FIAT TYPE CO3 ENGINE. OM55	STROKE: 130 mm. WITH POLO HOLES. 4 CYL.
SE 1914 SE 1173	4785104	FIAT 640, 6B 640-640 DT TRACTOR, 50 NC LORRY - VAN 8040.02/04. AGRICULTURAL TRACTOR, CLASSIC MODELS 640, 666, 680, 766, 780	MAIN JOURNAL DIA Ø: 76.20 mm. CON PIN DIA Ø: 58.737 mm. STROKE: 110 mm. FLANGE: 114 mm. 7 HOLES. 4 CYL.
SE 2041	FIAT SERIES 640, 666, 680, 766, 780. IVECO 50NC	4682232, 4785103	FLANGE: 110 mm. 7 HOLES. 4 CYL.
SE 2042	FIAT 640 IVECO 50NC 8040.02/04	4785104-8 WITH 8 WEBS	FLANGE: 110 mm. 7 HOLES. 4 CYL.
SE 2003	8060, 8065.25, 95.14.1, 109.14.1, 110.14	4785107	FIAT 150NT. EURO CARGO 116136 CV. 6 CYL.
FIAT DUCATO - IVECO DAILY			
SE 1718	IVECO DAILY 2.8L	500314784, 500329821, 504033129	IVECO DAILY 2.8L. FIAT DUCATO. 4 CYL.
SE 1719	IVECO FIAT	99436105, 500314779, 500347272	IVECO FIAT. NEW DAILY 2.5L DUCA TO. 4 CYL.
SE 1663	IVECO DAILY	4710898. 814021, 814061, 814421, 814461, 814481	IVECO DAILY. FIAT DUCATO. 4 CYL.
FORD - AUTOMOTIVE			
SE 2004	FORD	FORD MODEL T CRANKSHAFT FDS6164	FORD T CRANSHAFT
SE 2005	FORD 3 CYL. GEAR & FLANGE THREADED	FORD MODEL: 1910. YEAR: 1983-1986	REPLACEMENT NUMBER 83941938 FORD SBA115256470 FORD SBA115256471 FORD
SE 3010	FORD TRANSIT 2.4 TDCI (V184 - D2FA)	VC1Q 6303CB	4 CYL.
SE 3011	FORD RANGER 2.5.	XM34 6300BB	4 CYL.

SE REF	ENGINE #	PART #	DESCRIPTION
FORD - EBRO - FORDSON - NEW HOLLAND			
SE 1132	EIADDN6303F 220 220 C.I.D. 3.6 LITER	EIADDN6303F, E1ADDNN-6303-D, E1ADDNN-6303-E	FORDSON MAJOR DIESEL & SUPER MAJOR. FORDSON POWER MAJOR, FORDSON SERIES D, 4000 SERIES TRACTORS, EARLY MAJOR, FORDSON 5000 SUPER MAJOR. 4 CYL.
SE 1133	FORD SERIES D	713F-6303-AAA, 2701E-6303	INDUSTRIAL. 4 CYL.
SE 1134	C5NE6303K BSD442 4.2 STROKE 256 C.I.D. 4.2 LITER 78 TEETH GEAR	C5NE6303K, 6110A, FINIS 81804029	MAJOR 5000, 7000, SUPER MAJOR 5000, 5100, 5190, 5200, 5500, 5550, 5600, 5610, 5700, 6000, 650, 655, 6500, 6600, 6610, 6700, 6710 WHEEL TRACTORS: 7000, 7100, 7200, 7500, 7600, 7610, 7700, 7710 COMBINES: 620, 622. LOADERS: A62, 750, DORSETT. 4 CYL.
SE 1137	E0NN6303AA BSD329 4.2 STROKE 175 C.I.D. 2.9 LITER 3 CYL.	E0NN6303AA, C5NE6303L, C5NE6303R, C5NE6305, EN438, E5NN-63038-A	2000, 2100, 2110, 2120, 2300, 230A, 2310, 234, 2610, 2910, 3000. SUPER DEXTA, 3055, 3100, 3110, 3120, 3150, 3190, 3230, 3300, 3310, 333, 3330, 335, 336, 340, 340A, 3400, 3500, 3550, 3600, 3610, 3900, 3910 GAS 4000 SERIES
SE 1159	F0NN6303MA BSD333 4.4 STROKE 201 C.I.D. 3.3 LITER 3 CYL.	F0NN6303MA, C5NE6303N, C5TE6303, E5NN6306N	3930, 3930H, 3930N, 4000, 3930NO, 4000 MAJOR, 4100, 4110, 4130, 4130N, 4130NO, 4140, 4190, 4200, 4330, 4340, 4400, 4410, 4500, 4600, 4600SU, 4610, 4610SU, 4630, 260C, 455, 455C, 455D, 515, 530A, 531, 532, 535, 540, 540A, 540B, 545, 545A, 545C, 550, 555, 555A, 555B. SKID LOADERS: L783, L785
SE 1160	E5NN6303FA BSD444 4.4 STROKE 268, 4.4 LITER 76 TEETH GEAR	E5NN6303FA, D9NN6110AA, D9NN6303A, D9NN6303AA, E5NN6303CA, D5NN6303FA. FINIS 83956298, 83918890. 444 LATE - AFTER 9/4/1986	655, 6600, 6610, 6700, 7000, 7100, 7200, 7500, 7600, 7610, 7700, 7710 LOADER A62, DORSET DIESEL 4 CYL.
SE 1163	TRANSIT	894 F 6303 AB	4 CYL.
SE 1197	FORDSON	510 E/R, 5081E63038	6 CYL.
SE 1574	EZJL6300BA 172D 172 C.I.D. 2.8 LITER	EZJL6300BA, B9NN6302B, EZJL6300BAI, UF17095, B9NN6303B	INDUSTRIAL ENGINES: (55-78), TRACTORS: 601, 801, 901, 2000 SERIES, 1801 SERIES, 4000 SERIES, WHEEL LOADERS: 540. ALLIS CHALMERS CS 34. WITH BALANCER GEAR. DIESEL. 4 CYL.
SE 1575	FORD 172	UF17090, D4JL6300B, D1NL6300B, D1NL6303D, D1NN6300B, CONN6303J	GAS. 4 CYL. JUBILEE, NAA, 600, 601, 700, 800, 801, 900, 901, 2000, 4000
SE 1593	E5NN6303DA BSD444 4.4 STROKE 268, 4.4 LITER 78 TEETH GEAR	E5NN6303DA, D9NN6110AA, D9NN6303A, D9NN6303AA, E5NN6303CA, D5NN6303FA, E5NN6303FA, FINIS 83956298, 83918890	655, 6600, 6610, 6700, 7000, 7100, 7200, 7500, 7600, 7610, 7700, 7710 LOADER A62, DORSET DIESEL 4 CYL.
SE 1597	FORDSON	SANZ TYPE	KEYED NOSE. LATE MAJOR. 4 CYL.
SE 1664	C5NE6303K BSD442 4.2 STROKE 256 C.I.D. 4.2 LITER 76 TEETH GEAR	C5NE6303K, 6110A 442 LATE - AFTER 9.4.1986	MAJOR 5000, 7000, SUPER MAJOR 5000, 5100, 5190, 5200, 5500, 5550, 5600, 5610, 5700, 6000, 650, 655, 6500, 6600, 6610, 6700, 6710 WHEEL TRACTORS: 7000, 7100, 7200, 7500, 7600, 7610, 7700, 7710 COMBINES: 620, 622. LOADERS: A62, 750, DORSETT. 4 CYL.
SE 1779	FORD 4.9	FORD 4.9	6+1 FLANGE HOLES. 6 CYL.
SE 1805	EBRO TRACTOR	SPLINED. LIBYA MODEL.	LIP SEAL. 6 CYL.
SE 1821	6640	6640. BIG THROW	AVAILABLE WITH SEPARATE BALANCER GEAR. 4 CYL.
SE 1827	C5NE6303K 4.2 STROKE 78 TEETH GEAR	442 EARLY - PRIOR TO 9.4.1986	WITH REDUCED BALANCER GEAR WIDTH TEETH 4 CYL.
SE 1828	E5NN6303DA 4.4 STROKE 78 TEETH GEAR	444 EARLY - PRIOR TO 9/4/1986	WITH REDUCED BALANCER GEAR WIDTH TEETH 4 CYL.
SE 1858	LEHMAN 2700 SERIES DIESEL ENGINES SUITABLE FOR ALL FORD LEHMAN MARINE	CROSS REF VALID CRANKSHAFTS FOR THE 2712E: 713F6303-AAA, 826F6030-DAA, 826F-6030-DBA, 6106523, 6077423, 1606655	FORD SABRE MARINE CONVERSION OF THE LEHMAN DORSET 2712E DIESEL ENGINE. 4 CYL.
SE 1879	NEW HOLLAND SKID STEERS	NEW HOLLAND SKID STEERS C175, L175, L218, L220	STROKE: 100 mm. 4 CYL.
SE 1880	NEW HOLLAND SKID STEERS	NEW HOLLAND SKID STEERS C175, L175, L218, L220	STROKE: 90 mm. 4 CYL. DIESEL. WITH BALANCER FITMENT WEB

SE REF	ENGINE #	PART #	DESCRIPTION
FORD - EBRO - FORDSON - NEW HOLLAND			
SE 1915	FORD NEW HOLLAND	4785111, 98461246. MODEL: 8040 ENGINE: 60/65/80, 8035.05, 8035.06 30 SERIES: 3830, 4030. 35 SERIES: 3435, 3935, 4135, 4635. TD SERIES: TD60. TL SERIES: TL65. TN SERIES: TN55, TN65, TN70, TN75. 3010S, 4010S, 5010S, TD55D, TD60D, TD65D, TN60A	3 CYL.
SE 1916	FORD NEW HOLLAND 4 CYL.	4785110	30 SERIES: 4230, 4430. 35 SERIES: 4835, 5635, 6635, 7635. TD SERIES: TD80, TD90. TL SERIES: TL100, TL70, TL80, TL90. 5010S, TD75D, TD80D, TD85D, TN65F, TN70F, TN75F, TN75FA, TN80F, TN85FA, TN95F
SE 1941	FORD 158 158 C.I.D. 3 CYL.	DIESEL 2000, 3000 SERIES. TRACTORS WITH 158 CID ENGINE. FORD 2600, 3600	FORD 158 IS HAVING SPECIAL STROKE
SE 1947	E5NN6303FA	FORD CRANK BALANCER RING	STROKE: 4.4. 76 GEAR TEETH. LOOSE
SE 1948	FORD NEW HOLLAND TRACTOR SERIES 40 SERIES TS, TS110	81863553, 81865630, 81869022, 83998221, 83999541, 87800523, E9NN6303CB, E9NN6303DA, F0NN6300CA, F0NN6300CB, F0NN6300HA	5640, 6640, 7740. BIG THROW. 4 CYL. AVAILABLE WITH SEPARATE BALANCER GEAR RING
SE 2006	FORD BIG THROW CRANK	76 GEAR TEETH. BALANCER GEAR	LOOSE BALANCER
SE 2007	FORD	FORD 4 CYL. CRANKSHAFT FORD DOVER TECH MODEL	4 CYL.
SE 2008	FORD	FORD 6 CYL. CRANKSHAFT FORD TURBO DIESEL INTERCOOLER ENGINE FORD DOVER TECH MODEL CRANKSHAFT PART # 826F-6303EAA FORD D1210 ENGINE	6 CYL.
SE 2009	FORD	FORD 6 CYL. CRANKSHAFT FORD DORSET ENGINE CRANKSHAFT PART # 510 E/R, # 5081E63038	6 CYL.
SE 2010	FORD	FORD 6 CYL. CRANKSHAFT FORD 4.9L 300 REMAN MODEL. E-150 ECONOLINE VAN ENGINE: 4.9L. OHV 6L. 1981. GAS	6 CYL.
GENERAL MOTOR - OPEL			
SE 1567	SATURN	U.S. MODEL	4 CYL.
SE 1761	CORSA 1.6	90400074	1600 CC. 4 CYL.
SE 3033	OPEL CORSA- ASTRA-COMBO 1.3 CDTI - Z13DT DIESEL ENGINE.	55200307	4 CYL.
HINO			
SE 1188	HINO 6 CYL.	HINO DS 70	HEAVY DUTY. THICK FLANGE
SE 1762	MODEL H07D	HINO CARGO	6 CYL.
SE 1763	HINO 4 CYL. 105.50 KGS.	GEAR FACE HOLES: 6 + 1 FLANGE HOLES: 8 + 1	MAIN JOURNAL DIA Ø: 99.898 mm. CON PIN DIA Ø: 89.916 mm. CON PIN DIA Ø WIDTH: 88.000 mm. THROW: 70.000 mm. WITH 6 SEPARATE COUNTER WEIGHT
SE 1764	HINO EF750 4 CYL. 103.80 KGS.	GEAR FACE HOLES: 4 + 1 FLANGE HOLES: 6 + 1	MAIN JOURNAL DIA Ø: 109.900 mm. CON PIN DIA Ø: 83.900 mm. CON PIN DIA Ø WIDTH: 77.000 mm. THROW: 71.000 mm. WITH 8 SEPARATE COUNTER WEIGHT
SE 1829	HINO 6E	F3349611	6 CYL.
SE 1881	HINO WO4D	WO4D	4 CYL.
SE 1882	HINO 6D	WO6D	6 CYL.
HONDA			
SE 3012	HONDA CIVIC 1.6 MOTOR D16 (1990- 96) 8 BALTALI KASNAK ÇAPI 24 MM.	13310PLHG00	4 CYL.

SE REF	ENGINE #	PART #	DESCRIPTION
HYUNDAI			
SE 1861	MITSUBISHI 2.5 DIESEL. HYUNDAI. H100, HR100, D4BB	10231694, 102601, L200. 23111-42002, 23111-42901. VB079 HYUNDAI	MINIBUS GALLOPER, (VUC-VAN). KIA. BONGO 2500. 4 CYL.
SE 1963	HD-72. HD-77	23100-41700. D4AA. D4FB. D4DA	H-350 TRUCK NEW MIGHTY. 4 CYL.
SE 2011	D4DE. D4AF	23100-41001	TRUCK OLD MIGHTY. 4 CYL.
SE 2012	STAREX 2500	23111-42011	HYUNDAI STAREX 2500. 4 CYL.
SE 2013	2600 PICKUP	23111-42902	HYUNDAI 2600 PICKUP. 4 CYL.
SE 3013	HYUNDAI TUCSON - SANTAFE 2.0 CRDI D4EA - 4DEB ENGINE	23110-27420	4 CYL.
SE 3014	HYUNDAI İ20 - İX20 - TROY 1.4 CRDI - U14 D4FC ENGINE STROKE: 39.50	23110-2A502. 23110-2A510	4 CYL.
SE 3015	HYUNDAI ACCENT ERA & GETZ 1.4 CC (2006-2011) - G4EE ENGINE.	23111-26400	4 CYL.
IFA FORTSCHRITT			
SE 1923	W50	2795971006, 0692-01, IFA TRACTOR ZT300, 303 FORTSCHRITT 300, 303	BOLTED COUNTER WEIGHT. 4 CYL.
ISUZU			
SE 1725	ISUZU 4BC2	5-12310-161-0	EGYPT MODEL. 4 CYL.
SE 1777	ISUZU 6VD1	6VD1	6 CYL.
SE 1796	ISUZU 6VE1	6VE1	6 CYL.
SE 1925	ISUZU 4BG1	8-97112-981-2	4 CYL.
SE 1926	ISUZU 4HF1	8-97112981-1, 8-97033171-2	4 CYL.
SE 1962	ISUZU	4BD1, 4BD1-T, 4BD2-T. 8-12310-163-0, 5-12310-189-1	4 CYL.
SE 1972	ISUZU 4BE1	4BE1, 8-94416-373-2	4 CYL.
SE 2052	ISUZU 4BD1 235 CID 3.9 LITER	4BD1 ISUZU 5-12310-163-1	4 WEB CRANKSHAFT. 4 CYL.
SE 3016	ISUZU CHAMPION TRUCK 4HF1 (NPR 66 CHAMPION) 4HG1 (URBAN - RAYBUS)	8971129812 / 8971465202	4 CYL.
JAGUAR			
SE 2014	JAGUAR	AJV6D 3.0L	JAGUAR XF CRANKSHAFT. 6 CYL.
JCB			
SE 1920	JCB 448, 4.448 ENGINE	MODEL YEAR 2012 ONWARDS. 2 DA 50866 - 50906	CRANK CASE BORE 106 mm. NON-TURBO. 4 CYL.
SE 1969	JCB SB	320/03336, 320/03107, 320/09256. 444 ENGINE. TURBO	CRANK CASE BORE 103 mm. 4 CYL.
SE 2015	JCB 520 LE-530 FS	02/202527 - 02/202910 - 332, H0256	4 CYL.
SE 2016	JCB 3CX, 4CX	02/200915 - 02/202196	4 CYL.
SE 2017	JCB	02/201287	4 CYL.
SE 2018	JCB 02/634729	02/634729, 02/634968, 02/634020	AVAILABLE WITH 100 mm & 90 mm STROKE. 4 CYL.
JOHN DEERE			
3 CYL. Crankshafts			
SE 1168	AT18031 3-152, 152 C.I.D. 2.5 LITER 3-164, 164 C.I.D. 2.7 LITER 3-179, 179 C.I.D. 2.9 LITER	AT18031, T2351C, T23516, T23516T, T23517T	1020, 1030, 1040, 1120, 1130, 1140, 1520, 1530, 1630, 2020, 2040, 2150, 2155, 2240, 2255, 2355NCS, 2355NTSS, 300, 300A, 300BT, 301, 3018, 302A, 3029, 3029D, 310, 350 3 CYL.
SE 1685	RE50979 3-179 3029 POWER TECH 179 C.I.D. 2.9 LITER	RE50979, RE521348, R101223. 2¾" FROM END OF SNOOT TO GEAR	2155, 2355N, 2240, 5105, 5205, 5200, 5300, 5400, 5210, 5310, 5310N, 5410, 5510, 5510N, 5220, 5320, 5320N, 5400N, 5500N, 5420, 5420N, 5520, 5520N TRACTORS, 240, 250, 260, 270, 8875 SKID STEER LOADERS, 300 SERIES 3 CYL.

SE REF	ENGINE #	PART #	DESCRIPTION
JOHN DEERE			
4 CYL. Crankshafts			
SE 1190	AT18030 4-202, 202 C.I.D. 3.3 LITER 4-219, 219 C.I.D. 3.6 LITER 4-239 (EARLY) BELOW SN 769, 619, 239 C.I.D. 3.9 LITER	AT18030, 23909, 97926, 97928, R23517, R81959, R94644, R979266, T23266, T23480T, T23517, T23517T, T28743T SHORT SNOOT NOSE	1640, 1830, 1840, 2020, 2030, 2040, 2100, 2120, 2130, 2250, 2270, 2280, 2320, 2355C2, 2355TSS, 2360, 2420, 2450, 244E, 2510, 2520, 2523, 2555C2, 2650, 2730, 2735, 2750, 2755CS, 2755TSS, 2850, 2855N, 290D, 310, 310B, 310C, 310D, 315C, 3300, 34, 3430, 3830, 401, 401A, 401B, 401C, 401D, 4020, 4030T, 4039D, 4039T, 400, 410, 410B, 515B, 44, 440, 440A, 440B, 450, 450A, 450B, 450C, 450D, 454, 455D, 480, 480A, 480B, 480C, 482C, 490, 499, 515B, 6040, 6200, 6300, 6602, 6620, 6622, 70, 70D. 4 CYL.
SE 1171	RE20585 4-239 (LATE) ABOVE SN 769, 620 239 C.I.D. 3.9 LITER	RE20585, 23909, 97926, R121018, R81959 LONG SNOOT NOSE	2755, 6040, 4039, 190E EXCAVATOR. 300D, 310C, 315C. LOADER / BACKHOE 4 CYL.
SE 1686	RE56792 4-276D,T 276 C.I.D. 4.5 LITER 4 CYL.	RE56792, R108657, R5450, R54501, R54501R	340D, 440C, 448D, 540B, 540D, 548D SKIDDER, 344E, 410C, 444E, 510B, 510C, 610, 610B, 610C, 650G. LOADERS 450E, 450G, 455E, 455G, 550, 550A, 550B, 550G, 555, 555A, 555B, 55G CRAWLERS, 490D, 493D, 495D, 590D, 595, 595D EXCAVATOR, 2630, 2640, 6215, 6415
SE 1687	RE54883 4045D, 4045T 276 C.I.D. 4.5 LITER	RE54883, R120009, R90825 LONG SNOOT NOSE	410D, 440G, 510D LOADER, 490E EXCAVATOR. 540E SKIDDER, 548E GRAPPLE/SKIDDER 4 CYL.
SE 1688	POWER TECH	RE50618	SNOOT NOSE: 4 HOLES. 4 CYL.
SE 1744	4.5 POWER TECH STRAIGHT SNOOT NOSE	RE504638	TRACTORS: TC444H, 120, 210LE, 310E, 310G, 310SE, 310SG, 315SE, 315SG, 410E, 410G, 444H, 450G, 450H, 455G, 485E, 486E, 488E, 550G, 550H, 555G, 6410, 6410L, 650G, 650H, 5403, 5410, 5415, 5415H, 5420, 5420N, 5425, 5425N, 5510, 5510N, 5520, 5520N, 5525, 5525N, 5605, 5615, 5705, 5715, 5715HC, 6110, 6110L, 6120, 6120L, 6210, 6210L, 6215, 6220, 6220L, 6310, 6310L, 6310S, 6320, 6320L, 6403, 6405, 6410S, 6415, 6420, 6420L, 6510L, 6510S, 6520L. SKID STEERS: 260, 270, 280. SPRAYERS: 6700 4 CYL.
SE 1745	4.5 POWER TECH TAPER SNOOT NOSE	RE506195 TRACTORS: 310J, 310SJ, 344H (SN800000>), 3800, 410J, 444J (TIER III SN 611275>), 450J (TIER III SN 159987>), 550J (TIER III SN 159987>), 650J (TIER III SN 159987>)	EUROPEAN: SE6010, SE6020, SE6110, SE6120, SE6210, SE6220, SE6310, SE6320, SE6410, SE6420, 5078, 5085, 5090, 5415, 5510, 5510N, 5515, 5603, 5605, 5615, 5620, 5705, 5720, 5820, 6010, 6020, 6100, 6110, 6110L, 6115, 6120, 6120L, 6125, 6130, 6205, 6210, 6210L, 6215, 6220, 6220L, 6225, 6230, 6230 PREMIUM, 6310, 6310L, 6310S, 6320, 6320L, 6325, 6330, 6330 PREMIUM, 6405, 6410, 6410L, 6410S, 6415 (ENG SN 196071>), 6420, 6420L, 6420S, 6425, 6430, 6430 PREMIUM, 6510L, 6510S, 6520L. BRAZIL: 5403 (ENG. SN 006876>). 4 CYL.
SE 2047	4.270 AR40485	AR40485, R40570, R46498	AVAILABLE WITH BALANCER DRIVE GEAR. 4 CYL.
SE 2048	4.254, 4.270 AR26428	AR26428, R40570, R26540	AVAILABLE WITH BALANCER DRIVE GEAR. 4 CYL.
6 CYL. Crankshafts			
SE 1170	AT22562 6-303, 303 C.I.D. 5.0 LITER 6-329, 329 C.I.D. 5.4 LITER 6-359, 359 C.I.D. 5.9 LITER 6059D, T, A 359 C.I.D. 5.9 LITER	AT22562, A102, R108679, A102R, R26550, R26550R, F1910R, R40730, F2729R, RE45541, F2792R, T23264T, F3315R, T-23266, T23266T, F3560R, T23299T, F3561R, T23480T, R108658, T23517T	2840, 2940, 2950, 2955, 3120, 3130, 3140, 3150, 3155TSS, 4030, 4200, 4400, 4420, 4425, 444, 444C, 444CH, 444D, 499, 540, 540A, 540E, 540G, 544, 544A, 544C, 544D, 544E, 544G, 548E, 570, 570A, 570B, 710B, 710C, 710D, 6059D, 5049T, 699, 7484, 9900, 9910, 9920, 9930 6 CYL.
SE 1742	RE504639 POWER TECH	RE515785, RE52850	STRAIGHT SNOOT NOSE 6 CYL.
SE 1743	6.8 POWER TECH 6068HRW60, 6068HRW62 OR 6068HRW71 TIER II ENGINE 414 C.I.D. 6.8 LITER 2 OR 4 VALVE HEAD	RE505921	544J, 624J, 643J, 644J, 370D, 672D, 7130, 7220, 7320, 7230, 7330, 7420, 7520, 7630, 7720, 7730, 7820, 843J. COMBINE: 9550, 9550SH, 9560, 9560SH, 9560STS, 9570STS. COTTON PICKER: 9970, SPRAYER: 4720, 4830. TAPER SNOOT NOSE. 6 CYL.
SE 1850	6-414, 414 C.I.D. 6.8 LITER	RE45517	CRANKSHAFT WITH BIG WEBS 6 CYL.
SE 1860	6.8 POWER TECH	RE505124	6 CYL.
SE 2019	6.414D, 6.414T 6-414, 414 C.I.D. 6.8 LITER 6068D, T, 414 C.I.D. 6.8 LITER	RE33687, RE44517, AT63024, RE502191, R54619, R121027, R104523, RE45517	414, 414D, 544B, 544C, 544D, 624E, 624G, 640, 640D, 640E, 643, 643D, 648D, 648E, 648G, 653, 655B, 670, 670A, 670B, 672A, 672B, 690D, 690E, 693D, 750, 750B, 750C, 755, 755A, 755B, 790E. NON POWER TECH CRANKSHAFT WITH SMALL WEBS. 6 CYL.

SE REF	ENGINE #	PART #	DESCRIPTION
KIA			
SE 2056	KIA PRIDE CRANKSHAFT 1300	MB3H711301	6 FLANGE HOLES + 1 DOWEL PIN. 4 CYL.
SE 3017	KIA SPORTAGE - SORENTO 2.2 CRDI- D4HB ENGINE	23110. 2F110. 651F6. 2FU00	4 CYL.
SE 3018	KIA CERATO / RIO 1.5 - 1.6 CRDI U16 D4FB ENGINE	23111-2A701	STROKE: 42.25. 4 CYL.
KUBOTA			
SE 1559	GA-70, 7.5	TILLER	1 CYL.
SE 1596	RK-80	TILLER. WITH BALANCE PLATE & ALLEN SCREW	1 CYL.
SE 1695	L295, 295 DT TRACTOR	1532-23010	EGYPT MODEL. 3 CYL.
SE 1818	KND 3200	STATIONARY ENGINE	YEMEN MODEL
SE 1945	L295, 295 DT TRACTOR	1532-23010. NEW MODEL	EGYPT MODEL. 3 CYL.
SE 1955	KUBOTA 3 CYL.	KUBOTA 18.5 HP.	3 CYL.
SE 1956	KUBOTA 3 CYL.	KUBOTA 22 HP.	3 CYL.
SE 1957	KUBOTA 4 CYL.	KUBOTA 4 CYL.	4 CYL.
SE 1982	KUBOTA NEW MODEL. 3 CYL.	SPLINE STROKE 2.756	MAIN DIA Ø 1.6915"-1.692". CON DIA Ø 1.5735"-1.574"
LADA			
SE 1533	2103		STROKE 80 mm. 4 CYL.
SE 1534	2101 / 2107		STROKE 66 mm. 4 CYL.
SE 1720	CTK 70581	52215	STROKE 84 mm. 4 CYL.
SE 1721	CTK 70581	52215	STROKE 86 mm. 4 CYL.
SE 1722	CTK 70581	52215	STROKE 88 mm. 4 CYL.
SE 1883	STROKE: 80 mm	WITH POLO HOLE	SUITABLE FOR RUSSIA MARKET. 4 CYL.
LAND ROVER RANGE ROVER			
SE 1117	MODEL 1948-1954		4 CYL.
SE 1176	MODEL 1955-1958	241893	2 LITRE
SE 1177	MODEL 1959-1963	527167	2.25 LITRE
SE 1118	MODEL 1984, ONWARDS	ERC 5014	2.25 LITRE
SE 2020	LANDROVER	3.0 TD	DISCOVERY SDV6. 6 CYL.
SE 2021	LANDROVER	3.0 L, 2.7 L	RANGE ROVER TD V6 / RANGE ROVER SPORT. 6 CYL.
SE 3034	RANGE ROVER 3.0 SDV6 DIESEL ENGINE - 306 DT	LR038168 - LEF000002	V6 CYL.
SE 3035	RANGE ROVER 4.4 TDV8 DIESEL ENGINE - 448DT		V8 CYL.
SE 3036	RANGE ROVER 2.0 DIESEL - 240 PS / 204DT	LR090358	CON ROD Ø: 55 mm. MAIN ROD Ø: 59 mm. 4 CYL.
SE 3037	RANGE ROVER SPORT DISCOVERY 3 - 2.7 TDV6 ENGINE - 276DT	LR010297, LEF000001	V6 CYL.
LEYLAND			
SE 1121	400-401-402-411	F3336611, CJ0004	BRITISH LEYLAND U.K.
SE 1684	154 TRACTOR	4 CYL.	BRITISH LEYLAND U.K.
SE 1965	LEYLAND	CRANKSHAFT: ASHOK LEYLAND. X3307711	HAEC57/1. 6 CYL.
SE 2054	LEYLAND EURO 4 ENGINE	12 METER BUS	6 CYL
SE 2065	LEYLAND HINO 6E	HINO 6E	6 CYL.
SE 2066	LEYLAND HINO 6D	HINO 6D	6 CYL.
LISTER PETTER			
SE 2022	LISTER PETTER	TR1. T RANGE	1 CYL.
SE 2023	LISTER PETTER	TR2, TX2. T RANGE	2 CYL.
SE 2024	LISTER PETTER	TR3. T RANGE	3 CYL.

SE REF	ENGINE #	PART #	DESCRIPTION
LOMBARDINI			
SE 1184	LDA 510	LDA 510 SHORT	SHORT. TAPER DEGREE AFTER GEAR
SE 1187	MINIDOR	STROKE: 44 mm	
SE 1506	LDA 450		1 CYL.
SE 1568	1 CYL. ITALY	ITALY MODEL	EXTRA LONG KEY. THREADING
SE 1679	6LD360	1050.115	
SE 1696	1 CYL. ITALY	ITALY MODEL	FITTED WITH 2 GEARS
SE 1697	LDA 904 L20		EGYPT MODEL. 2 CYL.
SE 1713	LDA 11-D		SERBIA MODEL. 1 CYL.
SE 1714	LDA 12-K		SERBIA MODEL. 1 CYL.
SE 1766	LDA 450 / 510		1 CYL.
SE 1884	LDA 510 LONG	1052095. STROKE: 45 mm	3LD 510. LONG TYPE. FLYWHEEL TEETH RIGHT. MOTOR TYPE LEFT. SYRIA MODEL. 1 CYL.
SE 1885	LDA 510 SHORT	STROKE: 45 mm	SYRIA MODEL. 1 CYL.
SE 2058	LOMBARDINI	LDA 520	GL 520. GL 5. WITH 6 SPLINES
SE 2059	LOMBARDINI	LDA 520	GL 520. GL 5. FOR PUMP
SE 2060	LOMBARDINI	LDA 520	GL 520. GL 5. SINGLE KEY
M.A.N.			
SE 1661	D 0846	51.02101.7117	WITH SEPARATE COUNTER WEIGHT. 6 CYL.
SE 1698	D 2156. D 2356	51.02101.7123	WITH SEPARATE COUNTER WEIGHT. 6 CYL.
SE 1897	MAN	51.02101.1013, 51.02101.0013	WITH 6 COUNTER WEIGHTS. 6 CYL.
MAZDA			
SE 1523	SL 3500	SL01 11 301 C	4 CYL.
SE 1699	SL 3600		4 CYL.
SE 3019	MAZDA 3 - 6 - CX7 / 2.2 DIESEL ENGINE. MOTOR KODU : R2AA & R2BF	R2AA11300A	4 CYL.
SE 3020	MAZDA 6 2.0 TD	L59111300	4 CYL.
MERCEDES BENZ			
SE 1123	OM 352 6 CYL.	3520306802, 3520303402	WITH INTEGRATED COUNTER WEIGHT OIL SEAL: THREADED
SE 1124	OM 352/A 6 CYL.	3520308002	WITH INTEGRATED COUNTER WEIGHT OIL SEAL: KNURLED
SE 1125	OM 312/321 6 CYL.	1210 DI	WITH INTEGRATED COUNTER WEIGHT OIL SEAL: THREADED
SE 1126	OM 312/321 6 CYL.	1210 SE	WITH INTEGRATED COUNTER WEIGHT OIL SEAL: KNURLED
SE 1130	OM 314/A 4 CYL.	3140302002, 3140303202, 3140305205, 3140305501, 3140306102	WITH INTEGRATED COUNTER WEIGHT OIL SEAL: THREADED
SE 1158	OM 366/A/LA 6 CYL.	3660301602, 3660301502, 3660301402, 3660301102, 3660311201, 3660300702. 1101 - 14002. CONTRAP. MX-0602. VB469	WITH INTEGRATED COUNTER WEIGHT (TODOS) OIL SEAL: KNURLED
SE 1557	OM 314/A 4 CYL.	3140303302, 3140305502, 3140306002	WITH INTEGRATED COUNTER WEIGHT OIL SEAL: KNURLED
SE 1680	OM 352/353 6 CYL.	3520303402, 3520306802, 3520307402	WITH SEPARATE COUNTER WEIGHT OIL SEAL: THREADED
SE 1681	OM 352/353 6 CYL.	3520300902, 3520303702, 3520305802, 3520307002, 3520307802	WITH SEPARATE COUNTER WEIGHT OIL SEAL: KNURLED
SE 1682	OM 314/A 4 CYL.	3140303202, 3140305205, 3140306102, 3140302002, 3140305501	WITH SEPARATE COUNTER WEIGHT OIL SEAL: THREADED
SE 1683	OM 314/A 4 CYL.	3140303302, 3140305502, 3140306002	WITH SEPARATE COUNTER WEIGHT OIL SEAL: KNURLED
SE 1767	OM 366/A/LA 6 CYL.	3660301102, 3660300702	WITH SEPARATE COUNTER WEIGHT OIL SEAL: KNURLED
SE 1768	OM 355. OM 355A	3550306801	FLANGE 12 BOLT HOLES. NORMAL ASPIRATED. 6 CYL.
SE 1787	OM 366 6 CYL.	MERCEDES BENZ MOTOR OM 366	WITH INTEGRATED COUNTER WEIGHT OIL SEAL: THREADED
SE 1898	OM 364/A/LA 4 CYL.	364.030.1102, 364.030.0702, 364.030.1302, 364.030.1402, 364.030.1201, 374.030.0002	INTEGRATED. ASPIRATED-TURBO. INTERCOOLER BUSES 610U. TRUCKS L709, L710, L712, L912, L914, L915, 1214C CHASSIS. BUS LO 712/812, LB 814, LN 914, 914, 1114, 1214. 97.5 mm
SE 1937	OM 314. IRAN MODEL	SHORT NOSE: 91 mm. 4 CYL.	WITH INTEGRATED COUNTER WEIGHT OIL SEAL: KNURLED.

SE REF	ENGINE #	PART #	DESCRIPTION
MERCEDES BENZ			
SE 1981	OM 355	3550306701	FLANGE 8 BOLT HOLES. NORMAL ASPIRATED. 6 CYL.
SE 2025	OM 442 A/LA	442 030 0801, 442 030 0301, 442 030 0901, 442 030 0401	V8. MOTOR N 470879. 8 CYL.
SE 2026	OM 442 A/LA	422 030 4401, 422 030 3701, 422 030 4301	V8. MOTOR N 470878. 8 CYL.
SE 2067	OM 366/A/LA	MERCEDES. MX-0602. BRAZIL MODEL	INTEGRATED COUNTER WEIGHT. KNURLED OIL SEAL. 6 CYL.
SE 3021	MERCEDES BENZ OM 651 SPRINTER - VITO EURO5	651 030 2501	4 CYL.
SE 3022	MERCEDES BENZ OM 611 DE22 4 CYL. SPRINTER 646.	646 031 0401, 611 031 0201, 611 031 0001	4 CYL. SPRINTER 646.
SE 3023	MERCEDES BENZ OM 651 EURO5	651 030 0701	4 CYL.
SE 3024	MERCEDES BENZ OM 422-V8 ENGINE.	422 030 4301, 422 030 4401, 422 030 3701	V8 CYL.
SE 3025	MERCEDES BENZ OM 421	421 030 2401, 421 030 2501, 421 030 1701	V6 CYL.
SE 3026	MERCEDES BENZ OM 501 / 541-V6 ENGINE A/LA	541 030 0201, 541 030 0601, 541 030 0801	V6 CYL.
SE 3027	MERCEDES BENZ OM 441-V6 ENGINE A/LA	441 030 2101, 441 030 1701, 441 030 2201	V6 CYL.
SE 3028	MERCEDES BENZ OM 401 V6 OLD MODEL.	401 030 1901, 401 030 1501	V6 CYL.
SE 3029	MERCEDES BENZ OM 906 LA EURO 2/3	906 030 0602, 906 030 0502, 906 030 1102	STROKE 130 mm. FLANGE 103 mm. 6 CYL.
MITSUBISHI			
SE 1145	ME013667 4D31 CANTER	FE 444, FE 304, FB2LL FE TURBO DIESEL TRUCK	3.3 LITER 4 CYL.
SE 1146	T-120 COLT	M111 JAPAN	4 CYL.
SE 1572	T-120 SS	JAPAN	4 CYL.
SE 1594	MITSUBISHI M25	HD 330. HP 25	YEMEN MODEL. WITHOUT BALANCE WEIGHT & GEAR
SE 1595	MD102601 MITSUBISHI 4D55	4D55, L300. 2300CC. L300. OLD MODEL. PAJERO L200 - L400. 102601, VB079 MITSUBISHI 2.5D L200	2.5 LITER 4 CYL.
SE 1606	ME013668 4D34 CANTER	HD FE 449, FE 635, FE 639	4 CYL.
SE 1746	MITSUBISHI 6D 22 6 CYL. 111.60 KGS.	GEAR FACE HOLES: 6 + 1 FLANGE HOLES: 8 + 1	MAIN JOURNAL DIA Ø: 100.00 mm. CON PIN DIA Ø: 84.00 mm. THROW: 70.00 mm
SE 1765	MITSUBISHI 6D 16 6 CYL. 58.00 KGS.	GEAR FACE HOLES: 6 + 1 FLANGE HOLES: 6 + 1	MAIN JOURNAL DIA Ø: 79.95 mm. CON PIN DIA Ø: 64.94 mm. THROW: 57.50 mm
SE 1801	ME013667 4D32 CANTER	FE 444, FE 304, FB2LL FE TURBO DIESEL TRUCK	3.3 LITER. 4 CYL.
SE 1802	ME018297 4D33 / 4D34A CANTER	FE 659	4 CYL.
SE 1803	MD013680 4D35 CANTER	4D35	4 CYL.
SE 1863	MD374408, MD374409 4D56 CANTER	4D56 L300 2.5 NEW MODEL	4 CYL.
SE 1939	MD374408, MD374409 4D56T CANTER	4D56T L300. 2500CC	MD376961 4 CYL.
SE 2027	ME01734 4D34T - 4D35T CANTER	659. FE 659 T TURBO ENGINE	4 CYL.
SE 2057	MITSUBISHI 2.5 DIESEL. HYUNDAI. H100, HR100, D4BB	MITSUBISHI 2.5 DIESEL. 10231694, 102601, L200. 23111-42002, 23111-42901.	HYUNDAI. H100, HR100, D4BB, MINIBUS GALLOPER, (VUC-VAN). VB079 KIA. BONGO 2500
SE 3030	MITSUBISHI L 200 CR 4D56U 2500 MOTOR	1100A028, 1100A135	4 CYL.
SE 3031	MITSUBISHI L 200 EURO 6 MOTOR 4N15 (2015 - 2019)	1100A261	4 CYL.

SE REF	ENGINE #	PART #	DESCRIPTION
MWM			
SE 1700	D226, D229, D225	MWM. 001841C91I, 922681400018, 922681400016, 118670, 118690	WITH SEPARATE COUNTER WEIGHT. 4 CYL. AVAILABLE WITH BALANCER GEAR RING
SE 1811	MWM ENGINE 4.10 (10 SERIES) MAXXFORCE 4.3 ENGINE STROKE: 129 mm	9.410.0.140.004.5, AVAILABLE WITH BALANCER GEAR RING	AGRALE TRUCKS 7000, 7500, 8500, 9200, 8150, 8000, 575. ATLAS COPCO. IMPLANOR. JACTO 2000 / 2000 PLUS. MONTANA 2025, 2027, 2625, 2627. MÜLLER - PROTON VAP55A, VAP55L, VAP55LPT, VAP55P, VAP55PP. PLA PEGASUS 4.6 AIRP, HYDRA 200, M 200, ORION 250. RANDOM RK434F, RK406, RK406B. SERVSPRAY CITRUS, STEMAC. VOLKSWAGEN 7100, 7110, 8100, 8120, 8140, 8150, 9150. XCMG XT870. IVW-X104. 4 CYL.
SE 1812	MWM ENGINE 6.10 (10 SERIES) MAXXFORCE 6.5 ENGINE STROKE: 129 mm	9.610.0.140.006.5, AVAILABLE WITH BALANCER GEAR RING	VOLVO TRUCKS VM17, VM23. VALTRA-VALMET TRACTOR 1580. FORD TRUCKS F12000, F14000, F16000, B1618, B1620 BUS CHASSIS. VOLKSWAGEN TRUCKS 12180, 13180, 14150, 16180, 17210, 23210, BUS 16180, 16210, 17210, 17240. IVECO TRUCK 170E21. AGRALE TRACTOR 7125. ATLAS COPCO. HEIMER. IRRIGABRÁS. MACHIGERAL. MONTANA BULKY 3027. SERVSPRAY 4000/3000. SPW HIDRO TEC. STARA. STEMAC. IVW-X106. 6 CYL.
SE 2028	9.226.8.140.001.6 9.226.8.140.001.8 D226, D229, D225. IN-BUILT WEIGHT	AGRALE TRUCKS 1800, 4500, 4600, 5000, 7000DX, TRACTOR 5075-5085. ATLAS COPCO COMPRESSORS. CASE HARVESTER TL 75, 75E, ED, ES. TRACTOR TL EXITUS 75. CBT TRACTORS 8440-8450. DYNAPAC COMPACTORS. FIAT ALLIS FL18 LOADER, S90 EXCAVATOR. FORD TRUCKS F4000, F2000, F1000. MASSEY FERGUSON TRACTOR MF86X. MÜLLER - PROTON COMPACTORS VAP55 - VAP55M. MWM BUS FT 4000. NEW HOLLAND TL75 TUGS AND TRACTORS, UNTIL 2012. POCLAIN LOADERS TCS, TY. PUTZMEISTER BS CONCRETE PUMPS. TEMA TERRA COMPACTOR SPV165. TEREX - CIFALLI PAVER. VALTRA-VALMET TRACTORS 78, 80, 85, 86, 88, 785, 880, 885, 980. VOLKSWAGEN TRUCKS 6.80, 6.90, 7.90, BUSES 7.100	STROKE 120.0 mm BALANCER WEB DIA IS THERE. NO RING 4 CYL.
SE 2072	MWM D225-6, D229-6	9.229.0.140.036.5 9.229.8.140.006.8 9.325.8.140.026.6	STROKE 120.0 mm 6 CYL.
NAVISTAR			
SE 1676	3110995R91 D154, 154 C.I.D. 2.5 LITER	3110995R91, 05700AB, 751303, 751303R2, 751303R3, 751303R5, 8629 (DB TRACTOR) G164, 164 C.I.D. 2.7 LITER D165, 165 C.I.D. 2.7 LITER D171, 171 C.I.D. 2.8 LITER	144, 364, 384, 444 TRACTORS. S, SC, SE TRACTORS. GAS, 350, 500B, 600B, 780, 880, 885, 4600 TRACTORS 4 CYL.
SE 1677	3144626R91 D239 239 C.I.D. 3.9 LITER	3144626R91, 3144626R92, 015C1, 3132752R3, 015C1 1089, 3144626, 182752R2, 37CR4, 2744406R1, IH625R2	544, 574, 674, 684 685 BACKHOE, 685 TRACTOR, TD7, TD7E, TD8C CRAWLER TRACTORS, TD8 DOZER. AVAILABLE WITH BALANCER GEAR RING. 4 CYL.
SE 1678	3228376R91 D268 268 C.I.D. 4.4 LITER	3228376R91, 218528R1, 528R2- 79, 218528R2, A09-7292, 218528R3, 3.218528R1	510B LOADER NEUSS DIESEL (GERMAN BUILT). AVAILABLE WITH BALANCER GEAR RING. 4 CYL.
SE 2049	DT466 675669C92	470005, 4333-675669C91/C92, 675669C91, 675669C93, 4333- 675591C2, 675591C3	6 CYL.
SE 2050	DT436 675663C92	675051C1, 675663C92	6 CYL.
SE 2051	DT414 675668C92	675050C1, 675668C92	6 CYL.
NISSAN			
SE 1797	NISSAN. MODEL NE6	CPB12	6 CYL.
SE 3032	NISSAN YD25DDTI NISSAN NAVARA 2.5 NISSAN PATHFINDER 2.5 DDTI NISSAN FRONTIER	12200-AD210	4 CYL.

SE REF	ENGINE #	PART #	DESCRIPTION
PERKINS - MF			
3 CYL. Crankshafts			
SE 1101	31312436 3.152 ROPE 152 C.I.D. 2.5 LITER 3 CYL.	31312436, 026005M1, 736532M91, 31312419, 84402, 31312436, SD260034, 31312441, U5BG0031, 31312700, ZZ90084, 3637454M91, ZZ90116, 467, ZZ90148	KEYED NOSE. ROPE SEAL AGRICULTURAL: MF-35, 135, 148, 230, 240, 250, 254, 254S, 255, 350, 353, 355, 360, 363, 550. INDUSTRIAL: MF-20B, 20D, 20E, 20F, 30E, EPH, 40, 40E. MF-LANDINI C4500, R-DT5500
SE 1666	3.152 3 CYL.	84399, 31312437, 72080077, 4222686M1, 4222686V1, ZZ90147, ZZ90120, 72080077V	SPLINED NOSE ROPE SEAL
SE 1729	3.152, D3.152 3 CYL.	ZZ90748, ZZ90116, 3638309M91, 84402	KEYED NOSE. ROPE SEAL FITTED WITH COUNTER WEIGHT, WASHER & SCREW ALSO AVAILABLE WITH NOSE GEAR
SE 1102	31312701 3.152 LIP 152 C.I.D. 2.5 LITER 3 CYL.	026053M, 94458, 31312701, 94464, 31312707, U5BG0027, 31315135, ZZ90078, 3637410M91, ZZ90150, ZZ90122, 637399M91	KEYED NOSE. LIP SEAL AGRICULTURAL: MF-135, 148, 230, 240, 250, 254, 254S, 255, 350, 353, 355, 360, 363, 550. INDUSTRIAL: MF-20B, 20D, 20E, 20F, 30E, 30H, 40, 40E. MF LANDINI C4500, R-DT5500
SE 1667	3.152 3 CYL.	31312702, 31312704, 94463, 94459, ZZ90117	SPLINED NOSE LIP SEAL
SE 1730	3.152 3 CYL.	3132.0002K96/3	KEYED NOSE. LIP SEAL FITTED WITH COUNTER WEIGHT, WASHER & SCREW ALSO AVAILABLE WITH NOSE GEAR
SE 1888	PERKINS 1103 SPLINED	1103, 1103B-33, 1103C-33, 1103C-33T, 4181V017 - PERKINS DIESEL	LIP SEAL. 3 PULLEY HOLES. 6 + 1 FLANGE HOLES. 3 CYL. STROKE: 5.000" (127.000 mm). ROD: 2.4986-2.4994" (63.466-63.486 mm). MAIN: 2.9982-2.9990" (76.155- 76.176 mm)
SE 1889	3.152 3 CYL.	84399, 31312437	SPLINED. ROPE. WITH COUNTER WEIGHT ALSO AVAILABLE WITH NOSE GEAR
SE 1890	3.152 3 CYL.	3132001K91, 31312702, 31312704, 94463, 94459, ZZ90117	SPLINED. LIP. WITH COUNTER WEIGHT ALSO AVAILABLE WITH NOSE GEAR
SE 1975	PERKINS 1103 MILLED - KEYED	ZZ90236. NEW MODEL	SNOUT: MILLED - KEYED. 3 CYL. 3 PULLEY HOLES. LIP SEAL. 6 + 1 FLANGE HOLES
4 CYL. Crankshafts			
SE 1834	31315824 4.108 ROPE 107 C.I.D. 1.8 LITER	31315824, ZZ90124, 84417, U5BG0056	ROPE SEAL. 4 CYL. 445, 4600M, L555 SKID LOADER. E146 LOADER, M434-4 TRENCHER. INDUSTRIAL, MARINE
SE 1103	31315145 4.203 ROPE 203 C.I.D. 3.3 LITER 4 CYL.	026008MI, 3638473M91, 31315135, 742742M91, 31315138, 84407, 31315145, 85811, 31315148, 92484, 31315167, 92485, 31315184, U5BG0017, ZZ90121, U5BG0028, 3637399M91, ZZ900201, 84440, 31315174, 367752M91, 737309M91, 74274M91	KEYED NOSE. ROPE SEAL. A4.203, AD4.203, AG3.152 GAS. MF-65, 150, 155, 158, 165, 650, 765, MF-INDUSTRIAL 50, LANDINI. PERKINS, 192, A4, R-DT6000. AGRICULTURAL TRACTOR PRIMA SERIES 6000 DT, 6000R, 6000 SPECIAL, 7000R. CRAWLER TRACTOR C6000- CINGOLATI SERIES. MF TRACTOR 100 SERIES 155,158,165, 200 SERIES - 260. PRE 100 SERIES (1947-65) INDUSTRIAL TRACTOR - 50
SE 1668	4.203, D4.203	4.203, D4.203	SPLINED NOSE. ROPE SEAL. 4 CYL.
SE 1104	31315184 4.203 LIP KEYED NOSE 203 C.I.D. 3.3 LITER	026032M1, 94441, 31315182, 94454, 31315184, 94455, 742344M91, ZZ90111, 026033, 3637458M91	KEYED NOSE. LIP SEAL. 4 CYL. A4.203, AD4.203. MF-65, 155, 158, 165, 650, 765 (100 SERIES). MF-INDUSTRIAL TRACTOR 50, LANDINI. PERKINS A4.203, R-DT6000. PRE 100 SERIES (1947-65) - 65, 765
SE 1669	31315181 4.203, D4.203, A4.203 LIP. SPLINED NOSE 203 C.I.D. 3.3 LITER	026032M1, 94441, 31315181, 94454, 31315182, 94455, 31315184, ZZ90111, 742344M91, ZZ90095	SPLINED NOSE LIP SEAL 4 CYL.
SE 1105	4.236 / 4.248 4 CYL. HEAVY WEIGHT	3637789M91, U5BG0054, 31315911, 31315912, 84422, 85721, ZZ90093, 84421, 94434, 7340893M1, 31315851, 68050, 31315884, 736829M91, 3639541M1, 85821, 31315993, U5BG0053, ZZ90108	SPLINED NOSE. ROPE SEAL. MF 178, 185, 188, 194-F, 285, 294S-4S, 393, 397. MF INDUSTRIAL 50E/EX, 60H, 60H "S" SERIES. MF LANDINI R-DT8500, C7800, C7830. PERKINS A4.248, 4.248
SE 1106	4.236 / 4.248 4 CYL. HEAVY WEIGHT	3637401M91, U5BG0024, 31315981, 31315982, 31315991, 94435, 94436, ZZ90082, ZZ90081, ZZ90143, 741747M1, 741747ML	SPLINED NOSE. LIP SEAL. EW MF 265, 274, 274S, 274SK, 275, 285, 284S-4S, 365, 373, 375, 377, 383, 387, 565, 575, 675, 3050, 194-F, 285, 294-S- 4S, 393, 397, 178, 185, 188 MF LANDINI R-DT6550, MF LANDINI R-DT8500 PERKINS A4.236, PERKINS A4.248, C6830, R-DT7550, R-DT7530F 4.248 MF COMBINES 440, MF INDUSTRIAL 50, 50B, 50E/EX 50H/HX, 50H/HX'S' 60H, 60H'S' SERIES

SE REF	ENGINE #	PART #	DESCRIPTION
PERKINS - MF			
4 CYL. Crankshafts			
SE 1769	4.236 / 4.248 4 CYL. HEAVY WEIGHT	ZZ90202, ZZ90081, 364040M91, 3665768M2	SPLINED NOSE. LIP SEAL. 12 FLANGE HOLES
SE 1770	4.236 / 4.248 4 CYL. HEAVY WEIGHT	364040M91, 3665768M2	SPLINED NOSE. LIP SEAL. EW12 FLANGE HOLES. 3 PULLEY HOLES
SE 1107	4.236 / 4.248 1004 / 1004.4 / 1004T / 1004.4T 4 CYL. LIGHT WEIGHT	31315911, 31315912, 31315917, 84422, 85721, ZZ90093, 736829M91, ZZ90108, 3637789M91, 3639541M1	SPLINED NOSE. ROPE SEAL MF 168, 175, 178, 185, 188, 265, 274, 274SK, 275, 285, 284-4S, 365, 373, 375, 377, 383, 387, 565, 575, 675, 3050. MF LANDINI R-DT7500, R-DT6550, C6830, R-DT7550, R-DT7530F, PERKINS 4.236, A4.236, MF COMBINES 440, MF INDUSTRIAL 50, 50B, 50E/EX, 50H/HX 'S' SERIES
SE 1670	4.236 / 4.248 4 CYL. LIGHT WEIGHT	U5BG0026, 31315664	SPLINED NOSE ROPE SEAL 3 PULLEY HOLES
SE 1108	4.236 / 4.248 4 CYL. LIGHT WEIGHT	31315871, 31315631, 31315641, 31315664, 85821, 94433, 94434, 26042, 26046, U5BG0052, ZZ90122, ZZ90082, 736829M91, 741750M1, UR040591/3, 31315881, 741750ML	SPLINED NOSE. LIP SEAL MF 158, 175, MF LANDINI R-DT7500
SE 1736	4.236 / 4.248 PHASER 1004 4 CYL. LIGHT WEIGHT	ZZ90143, 3641031M91, 3637401M91, U5BG0026, 31315664	SPLINED NOSE LIP SEAL 3 PULLEY HOLES
SE 1737	4.236 / 4.248 1004 PHASER SERIES 4 CYL. LIGHT WEIGHT	ZZ90119, ZZ90202 PHASER 90 ENG.	LONG NOSE. SPLINED LIP SEAL 3 PULLEY HOLES
SE 1551	4.212, D4.212 4 CYL.	85719, ZZ90100, ZZ90076, 3637457M91, 737189M91	KEYED / SPLINED NOSE. ROPE SEAL MF 165 WITH A4.212. MF TRACTOR 100 SERIES (ITALIAN) 174, 165, 174C. LANDINI TRACTOR 500 SERIES 6500
SE 1552	4.212, D4.212 4 CYL.	94430, ZZ90077, 3637453M91, 742873M91	KEYED / SPLINED NOSE. LIP SEAL MF 165 WITH A4.212
SE 1662	Te20, MF35, 135	825216M1	PETROL MODEL
SE 1709	TEF20 DIESEL MF35, 23C DIESEL	302205, 1884134M91	4 CYL.
SE 1790	NEW 1004.4T PERKINS 4.236/1004T	ZZ90145, ZZ90212, U5BG0044, U5BG0055. PHASER 135 TI, 110 TI	LIP SEAL. 3 PULLEY HOLES 4 CYL.
SE 1791	4.236 / 4.248 4 CYL.	PERKINS: 31315661, 3709 980 09, 700 189 0 C1, 70260 030, 709 980 09. S 4004. MODERN ENGINES Q 20B. S4, S4T PLUS, P 4000, P 4001. CASE: 580 H. GM: D10, D20, D40, BONANZA - VERANEIO	SPLINED NOSE. LIP SEAL. EW 6 + 1 FLANGE HOLES. 3 PULLEY HOLES. HEAVY WEIGHT. THIS MODEL CANNOT BE APPLIED TO BALANCER MOTORS.
SE 1798	MASSEY FERGUSON Y.236 ENGINE	ZZ90082 HEAVY WEIGHT	SPLINED NOSE. ROPE SEAL. 6 + 1 FLANGE HOLES. 3 PULLEY HOLES. 4 CYL.
SE 1820	PERKINS 1004G, SERIES 1004-4	ZZ90238 4.236, 4.248	NEW 1000 SERIE, 1004-40, 1004-42, 100 SERIE EW. 4 CYL.
SE 1836	4.236 / 4.248 1004 / 1004.42 SERIES	ZZ90202 NEW PHASER VERSION	SPLINED NOSE. LIP SEAL 3 PULLEY HOLES. 4 CYL. ALSO AVAILABLE IN HEAVY CRANKSHAFT VERSION
SE 1839	ZZ90222, 1104 SERIES	ZZ90224, ZZ90239, 4225085M91	SPLINED NOSE. LIP SEAL. 10 + 1 FLANGE HOLES 3 PULLEY HOLES. WITH TIMING RING WEB. 4 CYL. STROKE: 5.000" (127.000 mm). ROD Ø: 2.4986-2.4994" (63.466-63.486 mm). MAIN Ø: 2.9982-2.9990" (76.155-76.176 mm)
SE 1710	1 THRUST PLATE. 3 BOLTS		SUITABLE FOR 4.248/4.236/6.354 CRANKSHAFT
SE 1851	PERKINS 400 SERIES 404C-2.2	104-22, 404C-22, 404C-22T, 115256990, 115256751, P770, P771	STROKE: 3.9370" (100.000 mm). ROD: 2.04582-2.04626" (51.964-51.975 mm). MAIN: 2.67550-2.67597" (67.957- 67.970 mm) NOSE: TAPERED, THREADED, FLANGE: LIP SEAL. 4 CYL.
SE 1854	PERKINS 400 SERIES 404C-2.2	104-22, 404C-22, 404C-22T, 115256750, 115256990, P770, P771	STROKE: 3.54331" (90.000 mm). ROD: 2.04582-2.04626" (51.964-51.975 mm). MAIN: 2.67550-2.67597" (67.957- 67.970 mm) NOSE: TAPERED, THREADED, FLANGE: LIP SEAL. 4 CYL.
SE 1921	ZZ90239, 1104 SERIES 4 CYL.	ZZ90222, ZZ90224, 4227020M91, 4225085M91, 4225086M91. AD-104082, 1104C-44, 1104C-E44TA, 1104D-44	SPLINED NOSE. 3 PULLEY HOLES LIP SEAL. 6 + 1 FLANGE HOLES WITH TIMING RING WEB

SE REF	ENGINE #	PART #	DESCRIPTION
PERKINS - MF			
4 CYL. Crankshafts			
SE 1927	NEW - PERKINS 1104 BIG END Ø 69.4 mm	PERKINS 1104 4 CYL. 69.4 mm BIG END Ø	SNOUT: 3 HOLES, SPLINED, KEYED FLANGE: LIP SEAL. 10 HOLES, 1 DOWEL
SE 1967	PK 4.318 PERKINS 4 CYL.	31315952, 31315843, 31315971, 31316323, 31316324, 31316325	SNOUT: SPLINED, 1 BOLT. FLANGE: ROPE SEAL, 6 BOLT, 1 DOWEL
SE 1968	A4.318 DIESEL PERKINS 4 CYL.	PERKINS ENGINE A4.318 DIESEL MASSEY FERGUSON MF285, MF1085	SNOUT: SPLINED, 1 BOLT. FLANGE: LIP SEAL, 6 BOLT, 1 DOWEL
SE 1978	MASSEY FERGUSON 1047539M1, Z145C500, Z145C600	MODEL: 135, 150, 230, 235, 245	WITH Z145 CONTINENTAL ENGINE. 4 CYL.
SE 1979	MF TRACTOR 2635	SIMPSON - MASSEY FERGUSON 3906519M1, S4002610, 1900227S01	4 CYL.
SE 2029	ZZ90237	ZZ90241, 4226955M91, T415205. 1104C-44, 1104C-44TA	SNOUT: 3 HOLES, KEYED. FLANGE: 10 HOLES, 1 DOWEL. 4 CYL.
SE 2030	ZZ90237 INDUSTRIAL ENGINE	ZZ90241, 4226955M91, T415205. 1104C-44, 1104C-44TA	BIG CON PIN JOURNAL. SNOUT: 3 HOLES, KEYED. FLANGE: 10 HOLES, 1 DOWEL. 4 CYL.
SE 2031	NEW PERKINS 1004 BIG WEB - SHORT SNOUT.	CROSS REF: ZZ90222, ZZ90239. 4 CYL.	SNOUT: KEYED WITH STEP. 3 PULLEY HOLES. FLANGE: LIP SEAL. 10+1 HOLES.
6 CYL. Crankshafts			
SE 1109	6.305	31323146, 84433, 026020N, 105321	KEYED NOSE. ROPE SEAL. 6 CYL.
SE 1690	6.305	105944	KEYED NOSE. LIP SEAL. 6 CYL.
SE 1553	6.354.4 6 CYL.	U5BG0037, ZZ90113, 3637408M91	KEYED NOSE. ROPE SEAL MF 399, 699, 1014, 1114, 1134, 1250, 2620, 2640, 2645, 2680, 2685, 2720, 2725, 3080, 3090, 3650. MF COMBINES 24, 27, 29, 29XP, 31, 530, 535, 560, 565, 620, 625, 660, 665, 750, 800, 805, 825. MF LANDINI R-DT1000, R- DT100005, R-DT12500, R-DT1300 MKII, R-DT14500 MKII. PERKINS A6.354.4, A6.372.4
SE 1775	6.354.4	ZZ90196, 4224303M91, 690811	KEYED NOSE. ROPE SEAL. 3 PULLEY HOLES. 6 CYL.
SE 1741	6.354.4 A6.354.4 T6.354.4 6 CYL.	31314021, 313111021, 68076, ZZ90086, 3637404M91, ZZ90113, 748751M1	KEYED NOSE. LIP SEAL. MF 2705, 3525, 3545, 3630, 3650. MF COMBINES 550, 750, 760, 850, 860. MF LANDINI R-DT14500, PERKINS A6.354.4, T6.354.4
SE 1554	6.354.4, 1006 / 1006T PHASER SERIES 6 CYL.	U5BG0035, 313H021, 3637019M91, 3131H024. T-226. 944604, 3131H022. PERKINS 6.354.4 FASE IV FUNDIDO, ZZ90086, 3637404M91, 4224054M91	KEYED NOSE. LIP SEAL. 3 PULLEY HOLES
SE 1560	6.354.4	ZZ90105, 3131H022	KEYED NOSE. LIP SEAL. TUFFTRIDED. 6 CYL.
SE 1671	1006 PHASER SERIES	3637019M91, ZZ90218, 31171682, U5B00036, U5B00037	KEYED NOSE. LIP SEAL. 3 PULLEY HOLES WITHOUT GEAR COLLAR STEP. 6 CYL.
SE 1110	ZZ90089, U5BG0045 6.354.2 6 CYL.	31322316, 31322317, 31325016, 31322301, 31325019, 31322302, 31325022, 31322321, 31325023, 31322322, 31325025, 31322351, 31325028, 31322421, 31325036, 31323202, 31325042, 31323207, U5BG0045, 31323251, ZZ90089, 31322361, 31322363, 31322364, 68063, 85727, 742150M1, 736902M1	SPLINED NOSE. ROPE SEAL. FLANGE HOLES: 6+1 HOLES / 12 HOLES. MF 1100, 1014, 1200. MF COMBINES 500, 510, 515, 520, 525, 620, 625. MF LANDINI R-DT9500, R-DT10000, R-DT100005. PERKINS A6.354, A6.354.1, A6.354.2, A6.372, A6.372.1
SE 1555	6.354.2 6 CYL.	31323261, 31323262, 94468, 94460, 94443, ZZ90090, U5BG0048, 742160M1, 742161M1. T-165. FASE II FUNDIDO	SPLINED NOSE. LIP SEAL. MF 1100, 1014, 1200. MF COMBINES 500, 510, 515, 520, 525, 620, 625. MF LANDINI R-DT9500, R-DT10000, R-DT100005. PERKINS A6.354, A6.354.1, A6.354.2, A6.372, A6.372.1
SE 1701	PERKINS 6.358	635855 VIRABREQUIN MOTOR PERKINS 6.358 - BCL	SPLINED NOSE. LIP SEAL HEAVY DUTY CRANKSHAFT. 6 CYL.
SE 1789	PERKINS 1106	PHASER 180TI, 6.354 PHASER 3638402M91, ZZ90085, ZZ90087	KEYED NOSE. LIP SEAL. 3 PULLEY HOLES. 6 CYL.

SE REF	ENGINE #	PART #	DESCRIPTION
PERKINS - MF			
6 CYL. Crankshafts			
SE 1806	6.305	EBRO TRACTOR	LIBYA MODEL. SPLINED. LIP SEAL. 6 CYL.
SE 1840	ZZ90228, 4225497M1 PERKINS 1106 6 CYL.	PERKINS: ZZ90213, ZZ90229 MF: 3637019M1 WITH MOUNTING FOR RELUCTOR / TIMING GEAR. AVAILABLE WITH LOOSE TIMING RING GEAR.	SNOUT: KEYED NOSE. 3 BOLTS. FLANGE: LIP SEAL. 10+2 HOLES. MAIN Ø: 2.9982-2.9990" [76.155-76.176 mm]. ROD Ø: 2.4986-2.4994" [63.466-63.486 mm]. STROKE: 5.000" [127.000 mm]
SE 1887	1106 SERIES TIMING RING	PERKINS. 3116L002/159	LOOSE TIMING RING
IMT - IMR - BALKAN STATES			
SE 1778	S44 WITH OIL SEAL	720252	mm THREADS. 4 CYL.
SE 1780	IMT 539. M33	813674	mm THREADS. 3 CYL.
SE 1781	IMT 549. DM33	815872	mm THREADS. 3 CYL.
SE 1793	M34	70147	mm THREADS. 4 CYL.
SE 1794	IMR 65. DM34	700147	mm THREADS. 4.203. 4 CYL.
SE 1813	S44 ROPE SEAL	HEAVY WEIGHT	mm THREADS. SPLINED. ROPE SEAL. 4 CYL.
SE 1814	IMR S46	6.354	SPLINED NOSE. LIP SEAL. 6 CYL.
SE 1815	IMR TS46	T6.354	KEYED NOSE. LIP SEAL. 6 CYL.
SE 1994	IMT 506. TILLER	50606400	1 CYL.
SE 2040	M33, 033 IMT 533, 539, 542 TAFE INDIA	813674	3 CYL.
PEUGEOT - CITROEN			
SE 1539	504		WITH SEPARATE COUNTER WEIGHT. 4 CYL.
SE 1706	XDP40		4 CYL.
SE 1899	PEUGEOT XD3P	XD3P. J9. 2500 cc.	4 CYL.
SE 2053	PEUGEOT - CITROEN ENGINE TYPE: XUD9	0501H1	PEUGEOT: 205, 305, 309, 306, 405, 806, Expert, Boxer, Partner Citroen: Evasion, Jumpy, Xsara, Xantia, ZX, Jumper, BX, Berlingo
SE 2061	PEUGEOT - CITROEN ENGINE TYPE: TU5JP4 (NFU, NFS, NFT)	0501H9	TU5JP4 CRANK SUITABLE For: ENGINE TYPE: NFU, NFS, NFT FLANGE HOLES: 6+1 DOWEL
SE 2062	PEUGEOT - CITROEN ENGINE TYPE: NFX, NFZ	0501H9	CRANKSHAFT SUITABLE FOR: PEUGEOT: 106 RALLYE, 206, 306 CITROEN: SAXO VTS, XSARA, ZX FLANGE HOLES: 6+1 DOWEL
SE 2063	PEUGEOT - CITROEN ENGINE TYPE: TU3 (KDZ, KDX)	0501J5	TU3 CRANKSHAFT SUITABLE FOR: PEUGEOT: 205, 306, 309 CITROEN: AX, BX, ZX ENGINE TYPE: KDZ, KDX FLANGE HOLES: 6+1 DOWEL
RENAULT			
SE 1562	12.1400 MOTOR	7700564485	4 CYL.
SE 1723	1.6 GASOLINE		4 CYL.
SE 1724	RENAULT 2.2 DIESEL	RENAULT OE 66606	VEHICLE TYPE : CAR-TRUCK TRAFIC R18 RODEO 2.1 DIESEL J8S ORIGINAL. 4 CYL.
SE 1990	RENAULT	RENAULT KWID 1000	
SE 1991	RENAULT LOGAN ENGINE TYPE: K4J	7700105831, 8200416789, 8200785985	RENAULT CRANKSHAFT SUITABLE FOR: Logan, Clio, Kangoo, Sandero, Thalia, Scnic, Modus, Symbol, Megane - WITH ENGINE TYPE K4J
SE 1992	RENAULT	RENAULT KWID 800	
SE 2069	RENAULT NAFTA 2.2 ENGINE R18. 2.1 TRAFIC	RENAULT NAFTA 2.2	VEHICLE TYPE: CAR-TRUCK 8 COUNTERWEIGHTS. 4 CYL.
SE 3038	RENAULT M9R ENGINE 2.0 DCI (MEGANE - KOLEOS - LATITUDE - TRAFFIC - LAGUNA)	8200385222	4 CYL.
SE 3039	RENAULT MEGANE - FLUENCE - CAPTUR - ESPACE - TALISMAN - SCENIC / R9M 1.6 DIESEL ENGINE.	122016377R M	4 CYL.

SE REF	ENGINE #	PART #	DESCRIPTION
RENAULT			
SE 3040	RENAULT MASTER 2.5 DCI G9U MOTOR.	8200314795	4 CYL.
SE 3041	RENAULT MASTER - TRAFFIC 3 - M9T ENGINE - 2.3 DCI.	8200805743 / 122010072R	4 CYL.
SE 3042	RENAULT MEGANE-LAGUNA-TRAFIC F9Q MOTOR 1.9 DCI.	8200037836	4 CYL.
SE 3043	RENAULT BROADWAY - TOROS 1400 CC R12 R9.	7700564485	4 CYL.
SE 3044	RENAULT FLUENCE-CLIO-KANGOO-MEGANE K9K MOTOR 1.5 DCI 14 METRIK.	8200382457	4 CYL.
RENAULT TRUCK			
SE 3045	PREMIUM 400	5600551684	6 CYL.
RUSSIAN "T/D" SERIES - VTZ			
SE 1503	T-25. VTZ T-25 A	D21-10005007-A2, D21-1005011-A3	DIA Ø 12. DIA Ø 14 WITH SEPARATE COUNTER WEIGHT. 2 CYL.
SE 1702	T-25, T-16 D-120	Z1-100501143, D21-1005011B	DIA Ø 12. DIA Ø 14 WITH INTEGRATED COUNTER WEIGHT. 2 CYL.
SE 1703	T-40, LTZ T-40M	D 144-1000 120-10	WITH SEPARATE COUNTER WEIGHT. 4 CYL.
SE 1752	D144, T-40	D-371005011B, D37M-1005011 B	WITH INTEGRATED COUNTER WEIGHT. 4 CYL.
SCANIA TRUCK			
SE 3046	SCANIA 112 DS 111-112-113.	342060 / 130 8467 / 312739	6 CYL.
SE 3047	SCANIA 141-142-143 DS/C 14.	370 850 / 134 0 620 / 137 9 666	V8 CYL.
SHIBAURA			
SE 2032	SHIBAURA N844, N844T		90 mm STROKE. 4 CYL. DIESEL. WITH BALANCER FITMENT WEB
SE 2033	SHIBAURA N844L, N844LT		100 mm STROKE. 4 CYL.
SE 2034	SHIBAURA N844, N844T	BALANCER GEAR. 108 TEETH	
SMD - JUMZ			
SE 1753	SMD 18/22 SMD-20	20-04c9 206167	JUMZ 6M, DT-75, NIVA, JENISEJ RUSSIA & UKRAINE. 4 CYL.
SE 1754	SMD-60 / T-150	60-04001-00, Z0-0401 102227	JUMZ. WITH SEPARATE COUNTER WEIGHT RUSSIA & UKRAINE
SE 1755	T-150		WITH INTEGRATED COUNTER WEIGHT. RUSSIA & UKRAINE
SOLIS - SONALIKA			
SE 1900	SOLIS - SONALIKA	700403068L	INTEGRAL WEIGHT. 4 CYL.
SE 1901	SOLIS - SONALIKA	INTEGRAL WEIGHT. 3 CYL.	STROKE: 118
SSANGYONG			
SE 3048	SSANGYONG ACTYON / ACTYON SPORTS / KYRON / REXTON 2.0 DIESEL ENGINE - D20T	6640310101	4 CYL.
SE 3049	SSANGYONG KORANDO / KORANDO SPORTS D20DTF - D20DTR 2.0 DIESEL ENGINE	6710300201	4 CYL.
STEYR			
SE 1917	STEYR	STEYR: 360KOMPAKT 4785111, 82982139, 98461246 ENGINE MODEL: 8035.05, 8035.06	3 CYL.
SE 2035	STEYR	4080020017, 406020012. STEYR WD 8073, 768 408.40	4 CYL.

SE REF	ENGINE #	PART #	DESCRIPTION
SUZUKI			
SE 1142	SUZUKI 800. LJ-80	12221-73001, 1221-78401	ALTO CARRY, SUZUKI F8. 800cc. 3 CYL.
SE 1143	SUZUKI SJ 410	1222175101, 1221-75102, 12221-75104	MARUTI GYPSY. SK410 CARRY. 1000cc. 4 CYL.
SE 1522	SUZUKI SJ 413		4 CYL.
SE 1771	SUZUKI V6	V6. 6 CYL.	6 CYL.
TOYOTA			
SE 1573	TOYOTA 1Y	22RE 4 CIL 2.4L	4 CYL.
SE 1928	TOYOTA 13 B	13401-58020	4 CYL.
SE 1929	TOYOTA 14 B	13401-58030 / 58021 / 58050	4 CYL.
SE 1930	TOYOTA 3 L	13401-54020 / 54060 / 54080 / 54100	4 CYL.
SE 2036	TOYOTA	QUALIS	4 CYL.
SE 2037	TOYOTA	INNOVA	4 CYL.
SE 3050	TOYOTA COROLLA VVTI 3ZZ 1.6 BENZIN MOTOR	13401-22030	4 CYL.
SE 3051	TOYOTA VERSO 1.6 DIESEL ENGINE	11217812985	4 CYL.
SE 3052	TOYOTA 1.4 D4D (2 KEYWAYS)	13401-33011	4 CYL.
TUMOSAN - TURKEY			
SE 1905	TUMOSAN 3 CYL.	TUMOSAN TRACTOR: 4785111, 98461246, 5088486, 99464932, 5801850182	46 SERIES: 55-46, 60-46. 56 SERIES: 55-56, 60-56. 65 SERIES: 55-65, 60-65. 66 SERIES: 45-66, 50-66, 55-66, 56- 66, 60-66. 75 SERIES: 55-75, 60-75. 76 SERIES: 45-76, 55- 76, 60-76. 85 SERIES: 55-85, 60-85, 62-85. 86 SERIES: 55- 86, 62-86. 88 SERIES: 55-88, 60-88. 90 SERIES: 55-90, 60- 90. 93 SERIES: 60-93. 94 SERIES: 60-94. L SERIES: L60
SE 1906	TUMOSAN 4 CYL.	TUMOSAN TRACTOR 80.66. 4785304, 4785110, 98451529, 5088487	MAIN JOURNAL DIA Ø: 79.791 mm. CON PIN DIA Ø: 63.744 mm. STROKE: 115 mm. FLANGE: 114 mm. 7 HOLES
SE 2038	TUMOSAN 6 CYL.	4785107, 8060, 8065.25, 95.14.1, 109.14.1, 110.14	FIAT 150NT. EURO CARGO 116136 CV
TVS - 3 WHEELER			
SE 1942	TVS 3 WHEELER	G1020010 CRANKSHAFT COMPLETE. NP.049	3 WHEELER. COMPLETE ASSEMBLY CRANK, CONNECTING ROD, PISTON, ETC.
URSUS			
SE 1147	URSUS C-330	42031050, C-328, C-330M, C-335, C-335M	2 CYL.
SE 1830	URSUS C-330	42.03105.0/3	2 CYL.
SE 1659	URSUS C-360	46.40399.0/3	HEAVY DUTY (URSUS II). 4 CYL.
SE 1193	URSUS C-360	46403992, C-355, S-4003	4 CYL.
SE 1886	URSUS C-385	83.003.501, 83003519	HEAVY DUTY (URSUS II). 4 CYL.
SE 1887	URSUS C-385	89.003.503, 89003509, 89003519	HEAVY DUTY (URSUS II). 6 CYL.
UTB - ROMANIA			
SE 1153	UTB 650	10303010	SMALL FLANGE. ROPE SEAL. 4 CYL.
SE 1154	UTB 660	2402.03.0301, 10303020	BIG FLANGE. LIP SEAL. 4 CYL.
SE 1995	UTB 3.6L	12103020	UNIVERSAL 550. LONG TRACTOR. 4 CYL.
VOLKSWAGEN			
SE 1993	VOLKSWAGEN	VOLKSWAGEN POLO	4 CYL.
SE 3053	VOLKSWAGEN VAG 2.0 TDI VAG AZV,BKD, BMM, BMN, CBDA-C, CEGA, CJAA.	03L105021C	4 CYL.
SE 3054	VOLKSWAGEN VAG 1.6 TDI VAG CAYB, CAYC, CAYD, CAYE.	03L105021A	4 CYL.
SE 3055	VOLKSWAGEN VAG 2.0 TDI VAG AZV,BKD, BMM, BMN, CBDA-C, CEGA, CJAA.	03L105021C	GEAR 4 CYL.
SE 3056	VOLVO BOLINDER D 350.		3 CYL.

INDIA CRANKSHAFT RANGE

SE REF	DESCRIPTION	SE REF	DESCRIPTION
	ACE		Mahindra & Mahindra
D-188	ACE 450	D-145	Arjun Tractor / Mahindra Arjun.
D-189	ACE 350	D-207	Mahindra. 4-Cyl. Long Stroke
D-190	ACE Forklift	D-208	Yuvo. 3-Cyl.
	Bharat Benz	D-209	Yuvo. 4-Cyl.
D-191	Bharat Benz. 6-Cyl.	D-210	Mahindra Maximo. 2-Cyl.
	Canter - Mitsubishi	SE 1899	XD3P. 4-Cyl.
D-102	Canter. 9 Flange Holes		Mahindra - Arjun
	Chevrolet	D-211	Arjun 555. Stroke 55 mm.
D-132	Chevrolet Tavera	D-212	Arjun 605. Stroke 58 mm.
D-202	Chevrolet Beat 1ST GEN, Beat 1ST GEN F/L, SAIL, SAIL U-VA - J96...067	D-213	Mahindra JCB. Earth Master. #705. Stroke 60.5 mm.
	Cummins	D-214	Arjun Nuvo. 4-Cyl.
D-171	Cummins 4BT. 4-Cyl.		Mahindra - Swaraj - RB Series
D-172	Cummins 6BT. 6-Cyl.	D-165	S - 724 / RA 2. 2-Cyl.
	Eicher	D-166	S - 733 / RB 22
D-103	24 HP. 1-Cyl.	D-232	S - 735 / RA 3. 3-Cyl.
D-104	312 / 364. 2-Cyl.	D-233	S - 855 / RB 33. 3-Cyl.
D-105	485 / 368	D-169	RB 44. 4-Cyl. Long Key / Small key
D-193	Xtrac. 1-Cyl.	D-170	RB 66. 6-Cyl. Long Key / Small key
	Escort	D-224	S 735XM. 3-Cyl. Stroke : 55 mm.
D-106	E - 335	D-225	S 735XM. 3-Cyl. Stroke : 58 mm.
D-107	E - 340	D-226	S 855XM. 3-Cyl.
D-108	E - 345	D-234	Swaraj # 735 XL. 3-Cyl.
D-109	E - 340 AVL / E - 350		New Holland
D-110	E - 355	D-219	3630. 3-Cyl.
	Farmtrac	D-220	Iveco Model. 3630. 4-Cyl.
D-111	E - 430 / 435		Shaktiman
D-112	E - 44 / 55. Main Ø 58 mm.	D-164	Shaktiman. 6-Cyl. 6 Separate Counter Weights
D-194	E - 44 / 55. Main Ø 60 mm.	D-223	Shaktiman. 4-Cyl.
	Fiat		Sonalika
D-195	E - 439. DS Plus	D-121	Sonalika. 3-Cyl. Stroke : 110 mm.
D-196	E - 498	D-197	Sonalika. 3-Cyl. Stroke : 118 mm.
	Fiat	D-198	Sonalika. 4-Cyl. Stroke : 110 mm.
D-134	Fiat Punto	D-199	Sonalika. 4-Cyl. Stroke : 118 mm.
	Ford		Suzuki - Maruti
D-203	Ford Figo	D-131	Maruti 800
	Harsha	D-235	Swift Diesel / Dzure
D-115	Harsha T-25. 2-Cyl.	D-236	Alto. 3-Cyl.
	Hyundai	D-217	Alto. 4-Cyl. K-series. Wagon-R
D-133	Hyundai Santro. 1.0L/1.1L	D-237	Maruti Ecko
D-230	Hyundai U11 - I10 Grand	D-238	Suzuki K-10. 3-Cyl.
D-231	Hyundai EON		Tata
	Hino	D-173	Tata 1510 / 1612 / 1613. 6-Cyl.
SE 2070	Hino 4D	D-174	Tata 609 / 709 / 1109. 4-Cyl.
SE 2071	Hino 4E	D-175	Tata 407. 4-Cyl.
SE 1882	Hino 6D	D-176	Tata 1210 SE. 6-Cyl.
SE 1829	Hino 6E	D-177	Tata Ace. With Weight. 2-Cyl.
	Kirloskar - Deutz	D-227	Tata 713. 6-Cyl.
D-124	KTL. 2-Cyl. / HA 2	D-228	Tata 1109. Euro IV. With Oil Seal. New Type Flange. 4-Cyl.
D-125	KTL. 3-Cyl. / HA 3		
D-126	KTL. 4-Cyl. / HA 4 / JCB 3 DX	D-229	Tata 407. Euro IV. With Oil Seal. New Type Flange. 4-Cyl.
D-127	KTL. 6-Cyl. / HA 6		
	Leyland	D-239	Tata Ace Euro. With Weight. 2-Cyl.
D-135	Leyland 400 / 401	D-240	Tata Sumo
D-206	Leyland Dost. 4-Cyl.	D-241	Tata Indica. 4-Cyl.
SE 2054	Leyland Euro 4 Engine 12 Meter Bus	D-242	Safari
	Mahindra & Mahindra	D-243	Vista / Manza / Xenon
D-130	Mahindra 2.2 Engine Scorpio	SE 2064	Tata. Super Ace Indigo. 4-Cyl.
D-138	Mahindra. 2-Cyl. 225 DI		Zetor
D-139	Mahindra. 2-Cyl. 225 TU	D-116	2511 / 2522. 2-Cyl.
D-140	Mahindra. 3-Cyl. 265 DI / 275 DI / 365 DI	D-117	3511 / 3522. 3-Cyl.
D-141	Mahindra. 3-Cyl. 385 DI / 275 TU	D-118	5511 / 5911. 4-Cyl.
D-142	Mahindra. 3-Cyl. Long Stroke TU / 265 TU	D-119	5922. 4-Cyl.
D-143	Mahindra. 4-Cyl. 575 DI / 475 DI		
D-144	Mahindra. 4-Cyl. MDI 3200 / 585 DI	D-120	Hindustan Super 50. 4-Cyl.



CRANKSHAFT MANUFACTURER



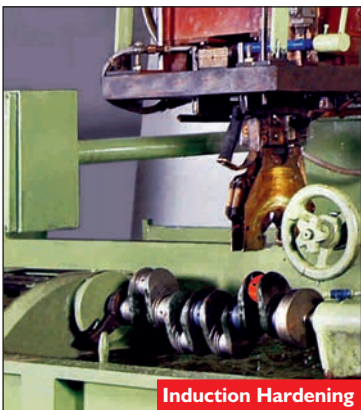
VMC + HMC Line



CNC Grinder



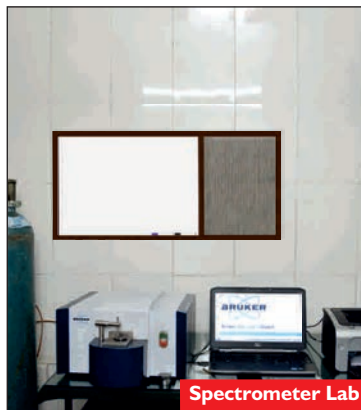
Horizontal Machining Center



Induction Hardening



Dynamic Balancing



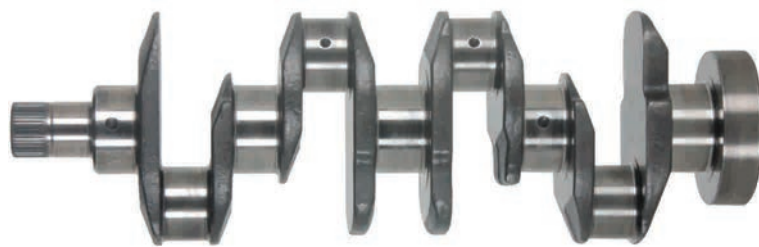
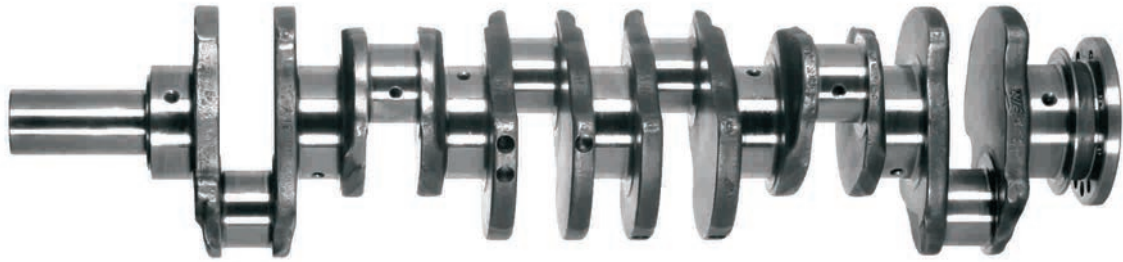
Spectrometer Lab



QC Inspection



Packing Division



STYR EXPORTS

STYR FORGE - CORPORATE OFFICE:

103, Imperial Palace, 45 Telly Park Road,
Andheri (East) Mumbai-400 069, India.
Tel: +91-22-26822482, 26833162, 26833163
Email: sales@styrgroup.com / styrexports@gmail.com

STYR FORGE - CRANKSHAFT PLANT:

43, Kakti Industrial Area, Kakti,
Belgaum - 591 113, India
Tel: +91-831-2470681, 2473736
Email: info@styrgroup.com

www.styrgroup.com

